

# Archaeological evaluation on land to the rear of Swan View, The Street, Hatfield Peverel, Essex, CM3 2DP

January 2017



**by Laura Pooley**

with contributions by Stephen Benfield  
figures by Ben Holloway and Emma Holloway

fieldwork by Ben Holloway with Gareth Morgan

**commissioned by Andrew Bilby  
on behalf of Paul Willis, Cherry Tree Products**

NGR: TL 78987 11662 (centre)

Planning ref.: 14/00488/FUL

CAT project ref.: 17/01h

ECC code: HPSV17

Braintree Museum accession code: [requested](#)

OASIS ref.: colchest3-273151



**Colchester Archaeological Trust**

Roman Circus House,  
Roman Circus Walk,  
Colchester,  
Essex, CO2 7GZ

tel.: 01206 501785

email: [lp@catuk.org](mailto:lp@catuk.org)

**CAT Report 1062**

February 2017

## Contents

1	Summary	1
2	Introduction	1
3	Archaeological background	1
4	Results	3
5	Finds	4
6	Discussion	5
7	Acknowledgements	5
8	References	5
9	Abbreviations and glossary	6
10	Contents of archive	6
11	Archive deposition	6
	Appendix 1 Context list	8
	Figures	after p8
	OASIS summary sheet	

## List of maps, photographs, tables and figures

Cover: general site shot

Map 1	Chapman and André's map of 1777	2
Map 2	25-inch OS map of Essex XLIV.11, first edition/revised 1862-96 showing Hatfield Villa	2
Photograph 1	Wall foundation F2, floor F5 and mortar base L5, looking NNW	3
Photograph 2	Wall foundation F4, looking NNW	4
Table 1	All finds by context	4
Fig 1	Site location in relation to new development (dashed blue)	
Fig 2	Results	
Fig 3	Results in relation to Hatfield Villa as plotted on the 6-inch OS map surveyed 1874 and published 1881	
Fig 4	Representative sections	

## 1 Summary

*An archaeological evaluation by trial-trenching (one trial-trench) was carried out on land to the rear of Swan View, The Street, Hatfield Peverel, Essex in advance of the construction of a new detached dwelling. The development is located on the site of the 19th-20th century Hatfield Villa and on the historic routeway known as The Street, which follows the projected line of a Roman road from London to Colchester. Part of Hatfield Villa, consisting of two brick wall foundations and a brick floor, was located in the evaluation trench. Archaeological and cartographic evidence suggests that Hatfield Villa was constructed in the early-mid 19th century and demolished sometime in the mid-20th century.*

## 2 Introduction (Fig 1)

This is the archive report for an archaeological evaluation by trial-trenching on land to the rear of Swan View, The Street, Hatfield Peverel, Essex which was carried out on 31st January 2017. The work was commissioned by Andrew Bilby, on behalf of Paul Willis, Cherry Tree Products in advance of the construction of a new detached property, and was undertaken by Colchester Archaeological Trust (CAT).

In response to consultation with Essex County Council Place Services (ECCPS), Historic Environment Advisor Teresa O'Connor advised that in order to establish the archaeological implications of this application, the applicant should be required to commission a scheme of archaeological investigation in accordance with the *National Planning Policy Framework* (DCLG 2012).

All archaeological work was carried out in accordance with a *Brief for archaeological trial trench evaluation*, detailing the required archaeological work, written by Teresa O'Connor (ECCPS 2016), and a Written Scheme of Investigation (WSI) prepared by CAT in response to the brief and agreed with ECCPS (CAT 2017).

In addition to the brief and WSI, all fieldwork and reporting was done in accordance with English Heritage's *Management of Research Projects in the Historic Environment (MoRPHE)* (English Heritage 2006), and with *Standards for field archaeology in the East of England* (EAA 14 and 24). This report mirrors standards and practices contained in the Institute for Archaeologists' *Standard and guidance for archaeological field evaluation* (ClfA 2014a) and *Standard and guidance for the collection, documentation, conservation and research of archaeological materials* (ClfA 2014b).

## 3 Archaeological background

The following archaeological background utilises the Essex Historic Environment Record (EHER) held at Essex County Council, County Hall, Chelmsford.

The site lies within an area of archaeological potential situated within the historic settlement of Hatfield Peverel and on the site of a house known as Hatfield Villa, which is no longer extant. The house is identified on historic maps dating from c 1870 and so must predate this. There are buildings indicated in this area on the Chapman and André maps of 1777 which may relate to Hatfield Villa or an earlier structure, and the survival of listed buildings nearby reveal settlement evidence dating back to the 14th century. Hatfield Villa is present on OS maps until the mid-20th century, after which it was demolished.

The site also lies along a historic routeway known as The Street which follows the projected line of a Roman road, forming part of a route from London to Colchester.

It is probable that the proposed development will disturb or destroy evidence relating to Hatfield Villa and the historic settlement of Hatfield Villa, and possibly features associated with activity along the Roman road.



**Map 1** Chapman and André's map of 1777



Bing © Getmapping plc © 2017 GeoEye © 2017 Intermap © 2017 Microsoft Corporation © 2017 HERE ©

**Map 2** 25-inch OS map of Essex XLIV.11, first edition/rev. 1862-96 showing Hatfield Villa

#### 4 Results (Figs 2-4)

One trial-trench was located within the footprint of the proposed new dwelling. It was machine excavated under the supervision of a CAT archaeologist and was L-shaped measuring 12m and 5m long by 1.8m wide.

Four layers were identified. Modern topsoil (L1, c 260-310mm thick) sealed a demolition horizon (L2, c 80-180mm thick) associated with the mid-20th century demolition of Hatfield Villa. Beneath L2 was a layer of medium grey/brown silty-clay subsoil (L3, c 190-260mm thick) which sealed natural silty-clays and gravels (L4).

Modern pit F1 was excavated at the southern end of the trench. Sealed by topsoil L1 and cut into demolition horizon L3, it contained fragments of modern china and glass and must date to after the mid-20th century. A second undated pit, F3, was excavated slightly further to the north. This pit was cut into natural L4 and was sealed by subsoil L3, indicating that it pre-dated the demolition of Hatfield Villa. It has an irregular appearance which would suggest that it was probably a tree-throw.

Wall foundation F2 formed a square/rectangular structure built out of red bricks and mortar. The structure measured 3.2m long by at least 1m wide and continued into the section edge. The wall itself measured 0.2m wide (the length of one brick). Inside the structure brick floor F5 had been laid on L5, a layer of loosely compacted mortar.

To the north of this structure was a second brick wall, F4, running across the evaluation trench. Also constructed out of red brick and mortar the wall measured 0.4m wide and was made with three courses of brick. No trace of any floor or internal structures were identified to the north of F4.



**Photograph 1** Wall foundation F2, floor F5 and mortar base L5, looking NNW



**Photograph 2** Wall foundation F4, looking NNW

## 5 Finds

A small quantity of modern finds, 19th-20th century, were recorded during the evaluation. All of the finds are listed and described by context in Table 1 below. The pottery fabrics referred to follow *CAR 7*. The bricks from wall foundations F2 and F4, and floor surface F5, are all 'soft-reds' (Ryan 1996, p95-6) dated to the 19th-20th century.

Feature (and finds) numbers	Description	Date
F1 (2)	<b>Pottery:</b> Staffordshire-type white earthenware (Fabric 48D), two fragments (114g), late 18th/19th – 20th century. <b>CBM:</b> Glazed tile fragment (66g), brown glaze, floral pattern, 20th century. <b>Glass:</b> fragment of a modern, clear glass, straight-sided tumbler (96g), 20th century.	20th century
F2/L2 (1), cleaning over F2	<b>Pottery:</b> Staffordshire-type white earthenware (Fabric 48D), one fragment (2g), late 18th/19th – 20th century; late slipped kitchenware (Fabric 51A), one fragment (10g), 19th-early 20th century. <b>CBM:</b> fragment of ceramic drain pipe (30g), fragment of yellow brick (92g), fragment of mortar (142g), modern. <b>Slate:</b> three fragments (62g), possibly roof-tile. <b>Roofing felt:</b> three fragments (2g), mid-20th century. <b>Iron:</b> five objects (254g) including a bracket and two nails. <b>Coal/clinker:</b> two fragments (28g). <b>Glass:</b> three fragments clear glass (26g), modern. <b>Animal bone:</b> three fragments (10g). <b>Oyster shell:</b> six pieces (50g).	20th century
F2 (3)	<b>CBM:</b> complete red brick (3.6kg), 230mm long, 110mm wide,	19th-20th century

	65mm thick, very shallow frog, mortar patches on top, bottom and side faces, 'soft-red' 19th-20th century.	
F4 (5)	<b>CBM:</b> two incomplete red bricks (3.5kg), 110mm wide, 65mm thick, mortar on top and bottom faces, 'soft-reds' 19th-20th century.	19th-20th century
F5 (4)	<b>CBM:</b> two incomplete red bricks (2.9kg), 110mm wide, 65mm thick, both have a very shallow frog, no mortar present, 'soft-reds' 19th-20th century.	19th-20th century

**Table 1** All finds by context (pottery identified by Stephen Benfield)

## 6 Discussion

Evaluation on land to the rear of Swan View revealed part of the remains of Hatfield Villa, consisting of two brick wall foundations and a brick floor of 19th-20th century date. Several attempts were made to overlay the old OS maps of Hatfield Villa onto modern mapping of the development site and the trench plan. We were eventually able to tie-in the first edition 6-inch OS map (surveyed in 1874 and published 1881) using the roads and a number of existing property boundaries as reference points. However, this highlighted several problems as although the roads and boundaries matched, the location of many of the surviving buildings, and indeed the location of the walls in the evaluation trench in relation to the plot of Hatfield Villa, were approximately 3-5m out (Fig 3). This is probably the result of discrepancies in the original OS map data. However, despite these discrepancies, the wall foundations identified in the evaluation trench do line-up with the plot of Hatfield Villa, albeit 3-5m further to the SW. Wall foundation F4 appears to represent the southern wall of the villa itself, with the structure formed by F2 and F5 representing an external building, like a scullery, to the south of the main property. No trace of any internal floors or walls were identified to the north of F4.

We know from historic cartographic sources that the property was in existence by 1874 so the bricks indicate a construction date of the early to mid 19th century. Chapman and André's 1777 Map of Essex shows earlier structures on the development site. Based on the evidence from this evaluation, these structures are probably unrelated to the later Hatfield Villa. No remains associated with these earlier structures were identified during the evaluation.

There was no archaeological evidence associated with the Roman road or Roman activity along it.

## 7 Acknowledgements

CAT thanks Andrew Bilby and Paul Willis of Cherry Tree Projects for commissioning and funding the work. The project was managed by C Lister, fieldwork was carried out by B Holloway and G Morgan. Figures are by BH and E Holloway. The project was monitored for ECCPS by Teresa O'Connor

## 8 References

Note: all CAT reports, except for DBAs, are available online in PDF format at <http://cat.essex.ac.uk>

CAR 7	2000	<i>Colchester Archaeological Report 7: Post-Roman pottery from excavations in Colchester, 1971-85</i> , by J Cotter
CAT	2014	<i>Health &amp; Safety Policy</i>
CAT	2016	<i>Written Scheme of Investigation (WSI) for an archaeological evaluation on land to the rear of Swan View, The Street, Hatfield Peverel, Essex, CM3 2DP</i>
ClifA	2014a	<i>Standard and Guidance for an archaeological evaluation</i>

ClfA	2014b	<i>Standard and guidance for the collection, documentation, conservation and research of archaeological materials</i>
DCLG	2012	<i>National Planning Policy Framework</i>
ECCPS	2016	<i>Brief for archaeological trial trench evaluation on land at the rear of Swan View, The Street, Hatfield Peverel</i>
English Heritage	2006	<i>Management of Research Projects in the Historic Environment (MoRPHE)</i>
Gurney, D	2003	<i>Standards for field archaeology in the East of England. East Anglian Archaeology Occasional Papers 14 (EAA 14).</i>
Medlycott, M	2011	<i>Research and archaeology revisited: A revised framework for the East of England. East Anglian Archaeology Occasional Papers 24 (EAA 24)</i>
Ryan, P	1996	<i>Brick in Essex from the Roman conquest to the reformation</i>

## 9 Abbreviations and glossary

CAT	Colchester Archaeological Trust
ClfA	Chartered Institute for Archaeologists
context	specific location of finds on an archaeological site
ECCPS	Essex County Council Place Services
EHHER	Essex Historic Environment Record
feature (F)	an identifiable thing like a pit, a wall, a drain: can contain 'contexts'
layer (L)	distinct or distinguishable deposit (layer) of material
medieval	period from AD 1066 to c 1500
modern	period from c AD 1800 to the present
natural	geological deposit undisturbed by human activity
NGR	National Grid Reference
post-medieval	from c AD 1500 to c 1800
residual	something out of its original context, eg a Roman coin in a modern pit
section	(abbreviation sx or Sx) vertical slice through feature/s or layer/s
wsi	written scheme of investigation

## 10 Contents of archive

**Finds:** none retained

### **Paper and digital record**

One A4 document wallet containing:

The report (CAT Report 1062)

ECC evaluation brief, CAT written scheme of investigation

Original site record (feature and layer sheets, finds record, plans)

Site digital photos and log, architectural plans, attendance register, risk assessment

## 11 Archive deposition

The paper and digital archive is currently held by the Colchester Archaeological Trust at Roman Circus House, Roman Circus Walk, Colchester, Essex CO2 7GZ, but will be permanently deposited with Braintree Museum under accession code: [requested](#)



**Distribution list:**

Andrew Bilby  
Paul Willis, Cherry Tree Products  
ECC Place Services Historic Environment Advisor  
Essex Historic Environment Record, Essex County Council



**Colchester Archaeological Trust**

Roman Circus House,  
Roman Circus Walk,  
Colchester,  
Essex, CO2 7GZ

tel.: 01206 501785

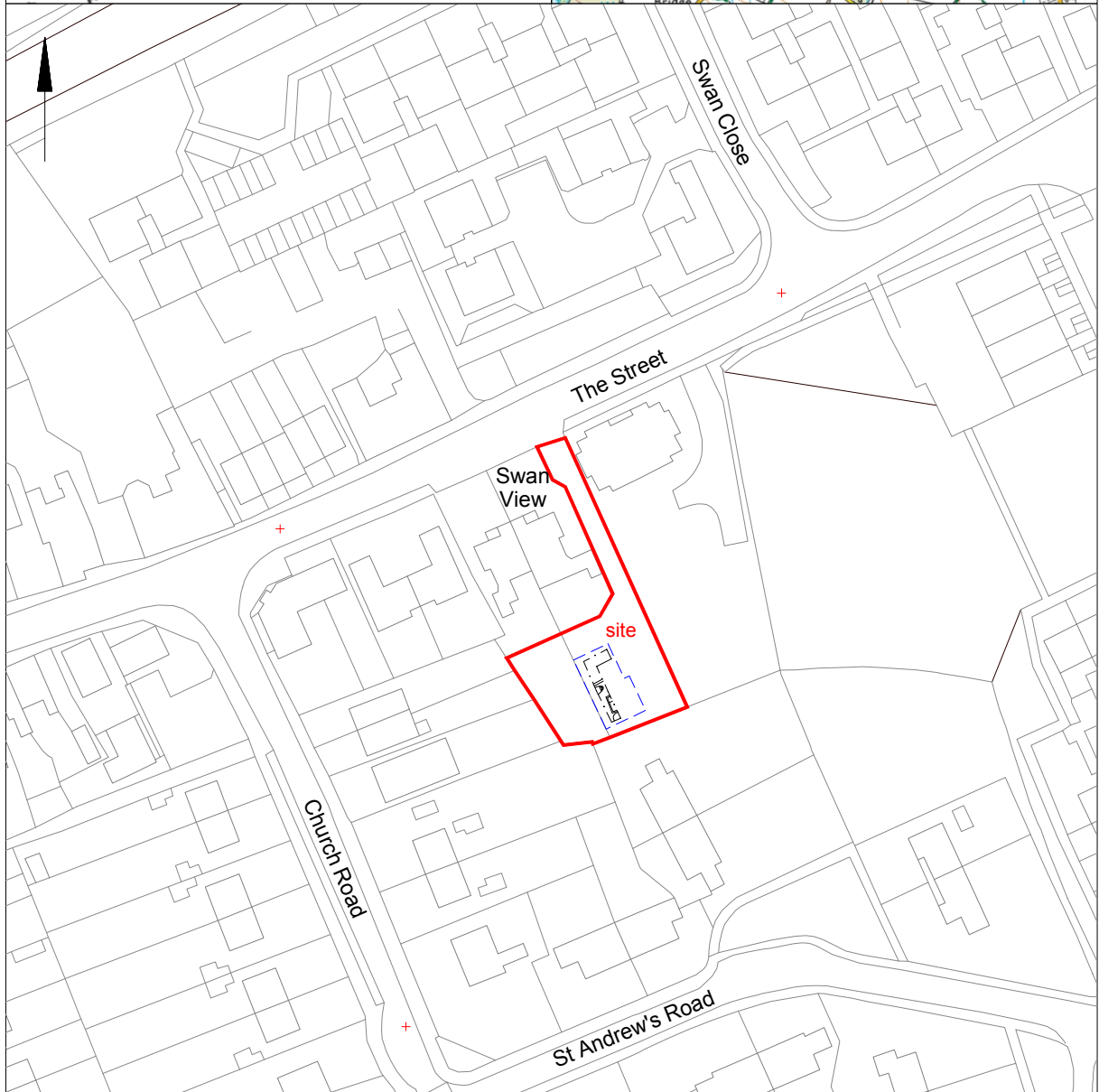
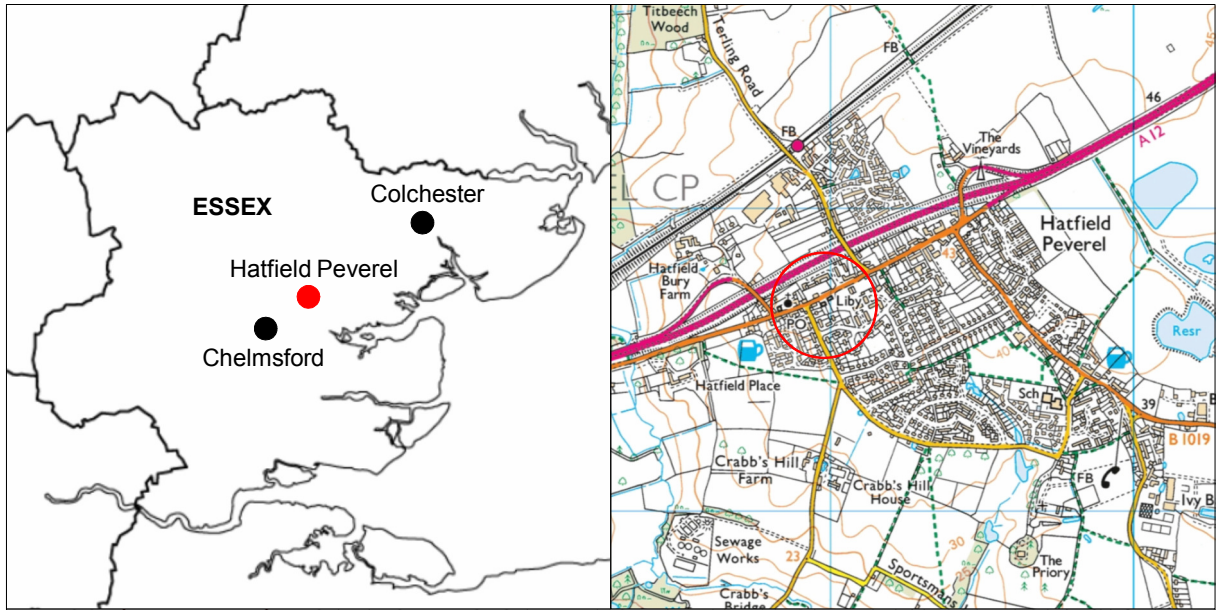
email: [lp@catuk.org](mailto:lp@catuk.org)

Checked by: Philip Crummy

Date: 15.2.2017

### **Appendix 1 Context list**

<b>Feature Number</b>	<b>Finds Number</b>	<b>Feature Type</b>	<b>Description</b>	<b>Date</b>
F1	2	Pit	Firm, moist dark brown/black silt with charcoal flecks	Post mid-20th century
F2	1, 3	Brick wall foundation	Red brick and mortar wall foundation	Early-mid 19th century
F3		Pit, probably a tree-throw	Firm, moist, medium grey/brown silty-clay	Undated, predates L2
F4	5	Brick wall foundation	Red brick and mortar wall foundation	Early-mid 19th century
F5	4	Brick floor	Red brick floor laid on L5	Early-mid 19th century
L1		Topsoil	Firm, moist, dark grey/brown silt. Brick, concrete, plastic (not retained)	Modern
L2		Demolition horizon	Firm, moist grey silt with large quantities of brick, tile and mortar	Mid-20th century
L3		Subsoil	Firm, moist, medium grey/brown silty-clay	undated
L4		Natural	Natural silty-clays with coarse gravel deposits	-
L5		Mortar base for F5	Loosely compact deposit of crushed yellow/grey mortar with rare crushed brick fragments/chips	Early-mid 19th century



© Crown copyright. All rights reserved. Licence number 100039294.

Fig 1 Site location in relation to new development (dashed blue)

0 50 m

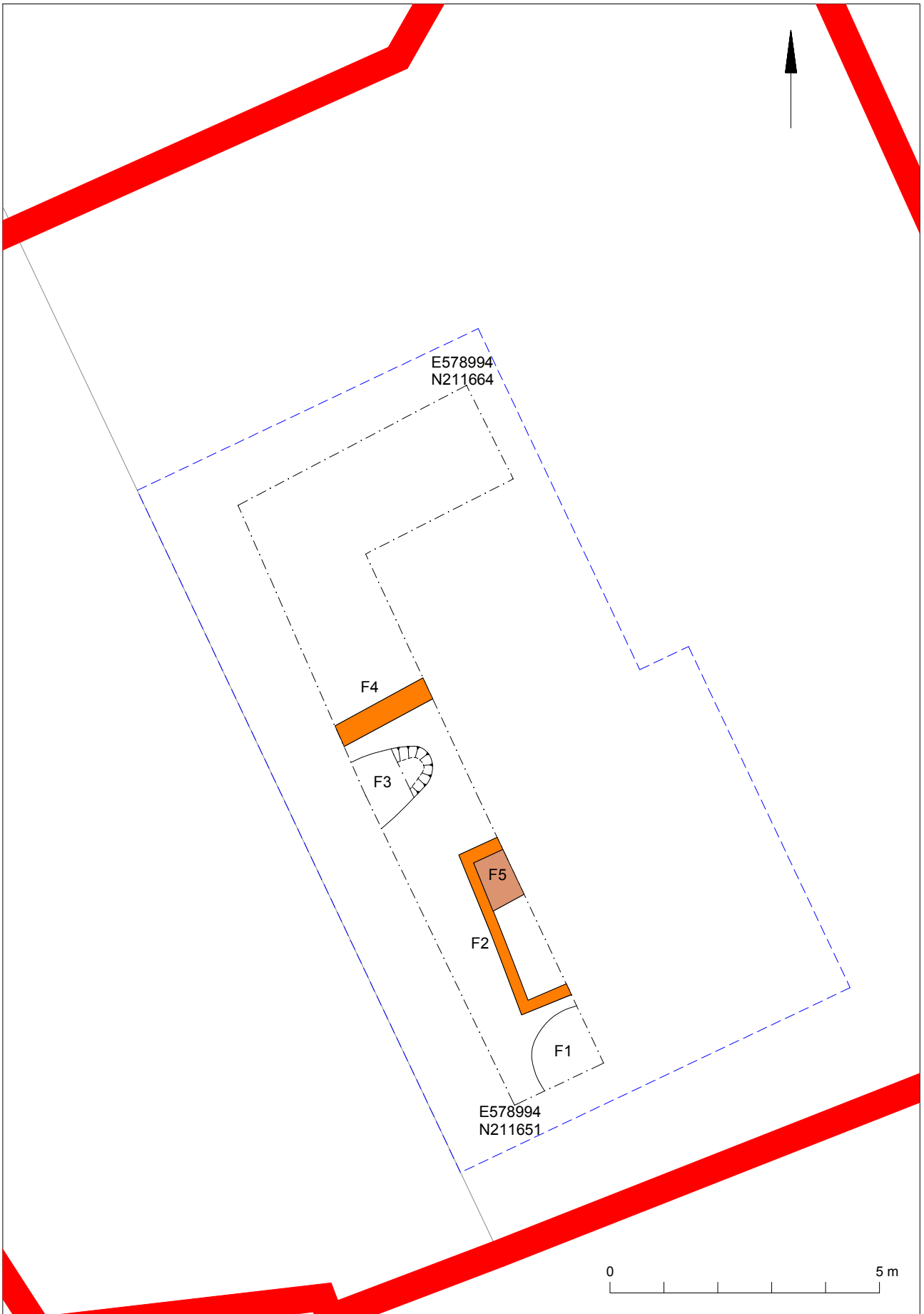


Fig 2 Results

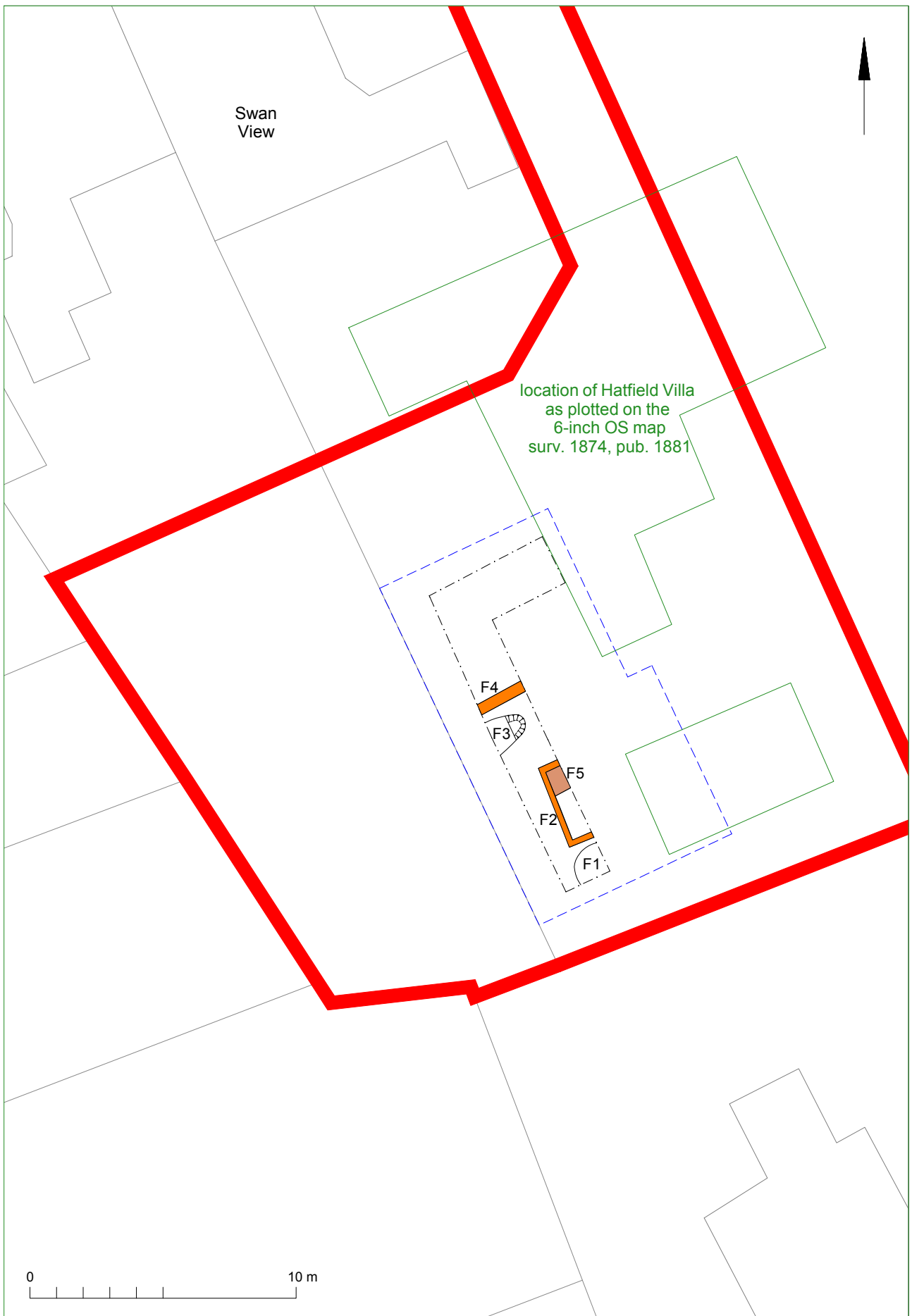


Fig 3 Results in relation Hatfield Villa as plotted on the 6-inch OS map surveyed 1874 and published 1881

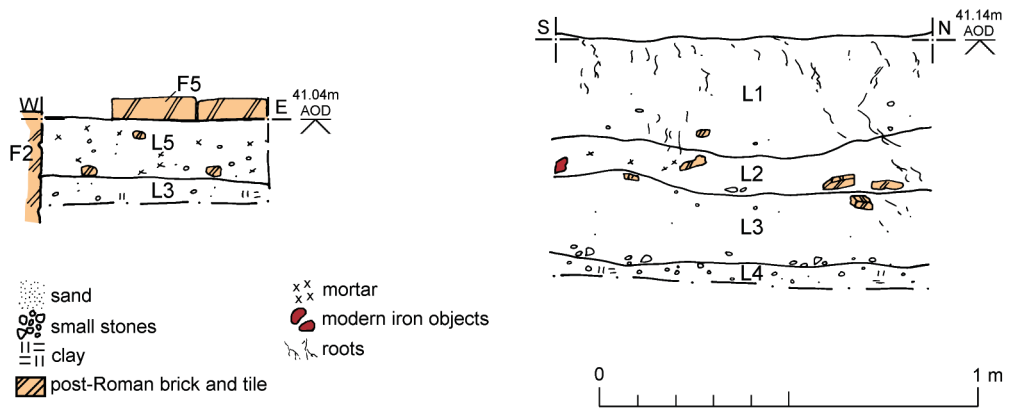


Fig 4 Representative sections.

# OASIS DATA COLLECTION FORM: England

[List of Projects](#) | [Manage Projects](#) | [Search Projects](#) | [New project](#) | [Change your details](#) | [HER coverage](#) | [Change country](#) | [Log out](#)

## Printable version

**OASIS ID: colchest3-273151**

### Project details

Project name	Archaeological evaluation on land to the rear of Swan View, The Street, Hatfield Peverel, Essex, CM3 2DP
Short description of the project	An archaeological evaluation by trial-trenching (one trial-trench) was carried out on land to the rear of Swan View, The Street, Hatfield Peverel, Essex in advance of the construction of a new detached dwelling. The development is located on the site of the 19th-20th century Hatfield Villa and on the historic routeway known as The Street, which follows the projected line of a Roman road from London to Colchester. Part of Hatfield Villa, consisting of two brick wall foundations and a brick floor, was located in the evaluation trench. Archaeological and cartographic evidence suggests that Hatfield Villa was constructed in the early-mid 19th century and demolished sometime in the mid-20th century.
Project dates	Start: 31-01-2017 End: 31-01-2017
Previous/future work	No / Not known
Any associated project reference codes	17/01h - Contracting Unit No.
Any associated project reference codes	14/00488/FUL - Planning Application No.
Any associated project reference codes	HPSV17 - HER event no.
Type of project	Field evaluation
Site status	None
Current Land use	Other 5 - Garden
Monument type	WALL FOUNDATIONS Post Medieval
Monument type	BRICK FLOOR Post Medieval
Monument type	PITS Modern
Significant Finds	POTTERY Post Medieval
Significant Finds	POTTERY Modern
Significant Finds	CERAMIC BUILDING MATERIAL Post Medieval
Significant Finds	CERAMIC BUILDING MATERIAL Modern
Significant Finds	GLASS Modern
Methods & techniques	"Sample Trenches"
Development type	Urban residential (e.g. flats, houses, etc.)
Prompt	Planning condition

Position in the planning process After full determination (eg. As a condition)

### Project location

Country England  
Site location ESSEX BRAINTREE HATFIELD PEVEREL land to the rear of Swan View  
Postcode CM3 2DP  
Study area 0.07 Hectares  
Site coordinates TL 78987 11662 51.774460246734 0.594662889513 51 46 28 N 000 35 40 E Point  
Height OD / Depth Min: 40.4m Max: 40.7m

### Project creators

Name of Organisation Colchester Archaeological Trust  
Project brief originator HEM Team Officer, ECC  
Project design originator Laura Pooley  
Project director/manager Chris Lister  
Project supervisor Ben Holloway  
Type of sponsor/funding body Developer

### Project archives

Physical Archive Exists? No  
Digital Archive recipient Braintree Museum  
Digital Archive ID requested  
Digital Contents "none"  
Digital Media available "Survey", "Images raster / digital photography"  
Paper Archive recipient Braintree Museum  
Paper Archive ID requested  
Paper Contents "none"  
Paper Media available "Context sheet", "Miscellaneous Material", "Photograph", "Plan", "Report", "Section"

### Project bibliography 1

Publication type Grey literature (unpublished document/manuscript)  
Title Archaeological evaluation on land to the rear of Swan View, The Street, Hatfield Peverel, Essex, CM3 2DP: January 2017  
Author(s)/Editor(s) Pooley, L.  
Other bibliographic details CAT Report 1062



Date 2017  
Issuer or publisher Colchester Archaeological Trust  
Place of issue or publication Colchester  
Description A4 ringbound loose leaf  
URL <http://cat.essex.ac.uk/all-reports.html>

Entered by Laura Pooley (lp@catuk.org)  
Entered on 15 February 2017

## OASIS:

Please e-mail [Historic England](#) for OASIS help and advice

© ADS 1996-2012 Created by [Jo Gilham](#) and [Jen Mitcham](#), [email](#) Last modified Wednesday 9 May 2012

Cite only: <http://www.oasis.ac.uk/form/print.cfm?id=276358> for this page