

# Archaeological monitoring at 184 Maldon Road, Colchester, Essex, CO3 3AY

**November 2018**



**by Dr Elliott Hicks**

figures by Chris Lister and Laura Pooley

fieldwork by Adam Tuffey

**on behalf of Katherine Lord**

NGR: TL 98685 24342 (centre)

Planning reference: 181949

CAT project ref.: 18/11e

Colchester Museum accession code COLEM: 2018.113

CHER ref: ECC4280

OASIS reference: colchest3-333286



**Colchester Archaeological Trust**

Roman Circus House,  
Roman Circus Walk,  
Colchester,  
Essex, CO2 7GZ

tel.: 01206 501785

email: [eh2@catuk.org](mailto:eh2@catuk.org)

**CAT Report 1356**

January 2019

## **Contents**

1	Summary	1
2	Introduction	1
3	Archaeological background	1
4	Aim	2
5	Results	2
6	Finds	3
7	Conclusion	3
8	Acknowledgements	3
9	References	3
10	Abbreviations and glossary	4
11	Contents of archive	4
12	Archive deposition	4

Figures after p5

EHER summary sheet

CAT WSI

OASIS summary

## **List of photographs and figures**

Cover: working shot

Photograph 1 Working shot, showing removal of demolition and topsoil, looking southeast 2

Fig 1 Site location

Fig 2 Results

## 1 Summary

Archaeological monitoring was carried out at 184 Maldon Road, Colchester, Essex, during groundworks for the replacement of an existing garage with a new one. Despite being located in an area of archaeological interest, no archaeological remains were encountered.

## 2 Introduction (Fig 1)

This report presents the results of archaeological monitoring at 184 Maldon Road, Colchester, Essex which was carried out 22nd-23rd November 2018. The work was commissioned by Katherine Lord and was undertaken by the Colchester Archaeological Trust (CAT) during groundworks for a new garage.

In response to consultation with Colchester Borough Council Planning Services (CBCPS), the Colchester Borough Council Archaeological Advisor Jess Tipper advised that in order to establish the archaeological implications of this application, the applicant should be required to commission a scheme of archaeological investigation in accordance with the *National Planning Policy Framework* (MHCLG 2018).

All archaeological work was carried out in accordance with a *Brief for Continuous Archaeological Monitoring and Recording*, detailing the required archaeological work, written by Jess Tipper (CBCPS 2018), and a written scheme of investigation (WSI) prepared by CAT in response to the brief and agreed with CBCPS (CAT 2018).

In addition to the brief and WSI, all fieldwork and reporting was done in accordance with English Heritage's *Management of Research Projects in the Historic Environment (MoRPHE)* (English Heritage 2006), and with *Standards for field archaeology in the East of England* (EAA 14 and 24). This report mirrors standards and practices contained in the Institute for Archaeologists' *Standard and guidance for archaeological watching brief* (ClfA 2014a) and *Standard and guidance for the collection, documentation, conservation and research of archaeological materials* (ClfA 2014b).

## 3 Archaeological background

The following archaeological background draws on the Colchester Archaeological Trust report archive and the Colchester Historic Environment Record (CHER) accessed via Colchester Heritage Explorer ([www.colchesterheritage.co.uk](http://www.colchesterheritage.co.uk)).

The proposed development lies within an area of high archaeological potential, specifically, within an area of Roman cemeteries. Approximately 700m to the northeast of the site over 700 Roman inhumations were excavated in the 1970s and 1980s in advance of the construction of the police station on Butt Road (CHER MCC481, CAR 9, 4-202). Eighteen Roman inhumation burials were also excavated in 1971 on the west side of the Maldon Road roundabout prior to the construction of Southway (CAR 9, 261). The Butt road burials form part of an area of Roman cemeteries originally termed 'the western cemetery' by Hull (1958), but more generally known as the Lexden cemetery (CHER MCC7525-9 and MCC7647, CAR 11).

In 1998 an evaluation and excavation were carried out at 47 Butt Road, 30m to the south of the Butt Road cemetery (CAT Reports 11 and 58, CHER MCC2799-MCC2801). The evaluation revealed a single inhumation with the subsequent excavation revealing a further three Roman inhumations, two being in coffins. Two of the graves cut a very large early Roman feature, part of the edges of which were observed in a later watching brief.

There have been a number of burial-related finds spots recorded on the HER. Of greatest significance was a Roman cremation urn found on the corner of Maldon Road and Constantine Road (CHER MCC1505). Roman burials have also been uncovered in

Beaconsfield Avenue (CHER MCC1901, MCC2436 and MCC2501), and on Errington Road (CHER MCC1451, MCC7686).

CAT has undertaken a series of watching briefs, evaluations and excavations to the east of the site over the last fifteen years as part of the Colchester Garrison Urban Village development. These revealed hundreds of Roman burials in two distinct cemetery areas to the northeast and east of the site (CAT Report 412 [Area J1 North CHER MCC2765]; CAT Report 1033 [Area H, CHER MCC10199-MCC10200]). Burial features ranged in date from the 1st-4th century AD and included inhumations, urned and unurned cremations, *bustum* and pyre sites, and evidence of at least one *mausoleum*. A Roman trackway bounded the cemetery area to the south, with the Roman circus (CHER MCC5549, scheduled monument 35614, NHLE no.1021426) 740m to the northeast.

Approximately 400m to the southeast, on land formerly occupied Goojerat Barracks, CAT undertook an evaluation in 2007-8 (CAT Report 456) followed by an excavation in 2010 (CAT Report 588). The evaluation identified the presence of Late Iron Age and early Roman ditches in the configuration indicating a rectangular enclosure, possibly containing the remains of a robbed-out Roman building. The excavation focussed on this part of the site but predominantly multi-phased ditches forming a series of enclosures were seen. A trapezoidal enclosure contained a well, groups of pits, post-holes and beam slots, most likely forming part of a domestic structure.

#### 4 Aim

Archaeological monitoring was undertaken to excavate and record any archaeological deposits which were exposed by the groundworks.

#### 5 Results (Fig 2)

The development site was situated within the footprint of a demolished garage where ground level had previously been lowered/terraced by 0.6-0.8m (presumably when the garage was constructed). As part of the current development, a CAT archaeologist supervised the further ground reduction of an area 7.7m by 5.7m. Approximately 0.12m of modern topsoil (L1, c 0.12m thick, medium/dark brown silty-loam) and 0.1m of natural sand (L2, light/medium yellow/orange/brown sand) was excavated. No new foundations were excavated as the new garage is to be built on a raft.



**Photograph 1** Working shot, looking southeast

No significant archaeological features were identified. Two areas of modern disturbance are likely associated with the construction of the now demolished garage.

## 6 Finds

There were no finds.

## 7 Conclusion

Despite the proximity of the site to a number of archaeologically-significant areas, no archaeological remains were encountered.

## 8 Acknowledgements

CAT thanks Katherine Lord for commissioning and funding the work. The project was managed by C Lister and carried out by A Tuffey. Figures were prepared by C Lister and L Pooley. The project was monitored for CBCPS by Jess Tipper.

## 9 References

Note: all CAT reports, except for DBAs, are available online in PDF format at <http://cat.essex.ac.uk>

- |                  |       |  |
|------------------|-------|--|
| Brown, D         | 2007  | <i>Archaeological Archives: A guide to best practice in creation, compilation, transfer and curation</i>   |
| CAR 9            | 1993  | <i>Colchester Archaeological Report 9: Excavations of Roman and later cemeteries, churches and monastic sites in Colchester, 1971-85</i> , by N Crummy, P Crummy & C Crossan   |
| CAR11            | 1995  | <i>Colchester Archaeological Report 11: Camulodunum II</i> , by CFC Hawkes and P Crummy  |
| CAT              | 2018  | <i>Health &amp; Safety Policy</i>  |
| CAT              | 2018  | <i>Written Scheme of Investigation (WSI) for continuous archaeological recording at 184 Maldon Road, Colchester, Essex, CO3 3AY</i>  |
| CAT Report 11    | 1997  | <i>An Archaeological evaluation at 47 Butt Road Colchester</i>   |
| CAT Report 58    | 1998  | <i>An excavation at 47 Butt Road Colchester</i>  |
| CAT Report 412   | 2011  | <i>Report on the archaeological investigations carried out on Areas C1, C2, E, J1, O, Q and S1 of the Alienated Land, Colchester Garrison, including the Time Team trenches and the Alienated Land watching brief: May 2004-January 2005</i> |
| CAT Report 456   | 2008  | <i>Stage 1b archaeological evaluation, Alienated Land Area L/N, Colchester Garrison, Colchester, Essex: October 2007.</i>  |
| CAT Report 588   | 2012  | <i>Stage 2 archaeological excavation, Alienated Land Area L/N (former Goojerat Barracks), Colchester Garrison, Colchester, Essex: June-July 2010.</i>  |
| CAT Report 1033  | 2011  | <i>Roman burials: Archaeological excavation (Stage 2) on Colchester Garrison 'Alienated Land' Area H, off Butt Road, Colchester, Essex, CO3 2DL September 2012 – February 2013.</i>  |
| CBCPS            | 2018  | <i>Brief for continuous archaeological monitoring and recording at 184 Maldon Road, Colchester, CO3 3AY</i> , by J Tipper  |
| CIfA             | 2014a | <i>Standard and Guidance for an archaeological watching brief</i>  |
| CIfA             | 2014b | <i>Standard and guidance for the collection, documentation, conservation and research of archaeological materials</i>  |
| English Heritage | 2006  | <i>Management of Research Projects in the Historic Environment (MoRPHE)</i>  |
| Gurney, D        | 2003  | <i>Standards for field archaeology in the East of England</i> . East Anglian Archaeology Occasional Papers 14 (EAA 14).  |
| Hull, M R        | 1958  | <i>Roman Colchester</i> , RRCSAL, 2  |
| Medlycott, M     | 2011  | <i>Research and archaeology revisited: A revised framework for the East of England</i> . East Anglian Archaeology Occasional Papers 24 (EAA 24)  |

MHCLG                      2018      *National Planning Policy Framework*. Ministry of Housing, Communities and Local Government.

## 10 Abbreviations and glossary

CAT	Colchester Archaeological Trust
CBCPS	Colchester Borough Council Planning Services
CBM	ceramic building material, ie brick/tile
CHER	Colchester Historic Environment Record (previously UAD, <b>Urban Archaeological Database</b> )
ClfA	Chartered Institute for Archaeologists
context	specific location of finds on an archaeological site
feature (F)	an identifiable thing like a pit, a wall, a drain: can contain 'contexts'
Iron Age	period from 700 BC to Roman invasion of AD 43
layer (L)	distinct or distinguishable deposit (layer) of material
modern	period from c AD 1800 to the present
natural	geological deposit undisturbed by human activity
NGR	National Grid Reference
OASIS	<b>Online Access to the Index of Archaeological Investigations</b> , <a href="http://oasis.ac.uk/pages/wiki/Main">http://oasis.ac.uk/pages/wiki/Main</a>
Roman	the period from AD 43 to c AD 410
section	(abbreviation sx or Sx) vertical slice through feature/s or layer/s
wsj	written scheme of investigation

## 11 Contents of archive

**Finds:** n/a

### **Paper record**

One A4 document wallet containing:

The report (CAT Report 1356)

CBCAA evaluation brief, CAT written scheme of investigation

Original site record (layer sheets, plans)

Site digital photos and log

### **Digital record**

The report (CAT Report 1356)

CBCAA evaluation brief, CAT written scheme of investigation

Site digital photographs, photographic thumbnails and log

Graphics

Survey data

## 12 Archive deposition

The paper and digital archive is currently held by the Colchester Archaeological Trust at Roman Circus House, Roman Circus Walk, Colchester, Essex, CO2 7GZ, but will be permanently deposited with Colchester Museum under accession code COLEM: 2018.113.

**Distribution list**

Katherine Lord

Jess Tipper, Colchester Borough Council Planning Services

Essex Historic Environment Record



**Colchester Archaeological Trust**

Roman Circus House,

Roman Circus Walk,

Colchester,

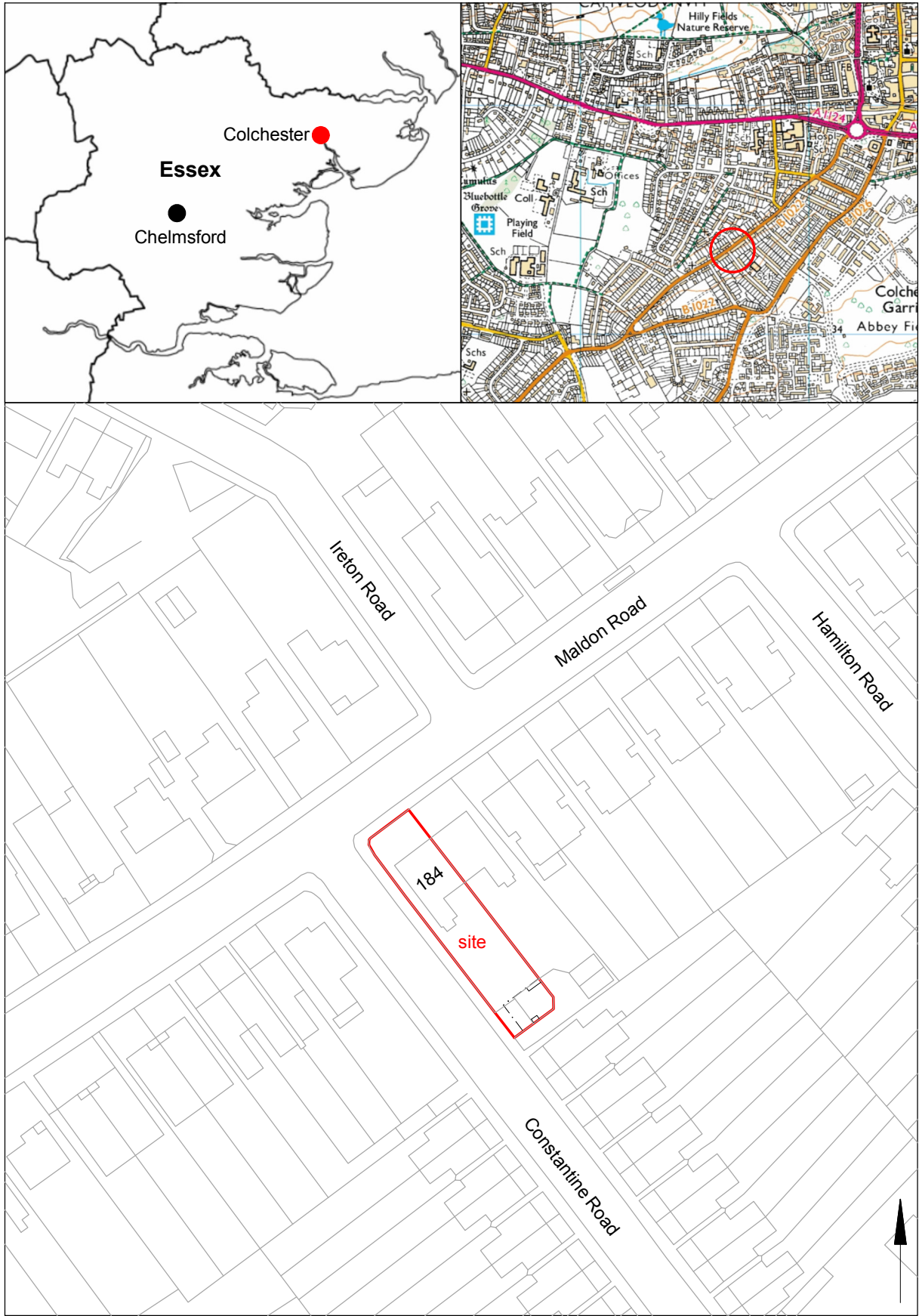
Essex, CO2 7GZ

tel.: 01206 501785

email: [eh2@catuk.org](mailto:eh2@catuk.org)

Checked by: Philip Crummy

Date: 3.1.2019



© Crown copyright. All rights reserved. Licence number 100039294.

Fig 1 Site location.

0 50 m



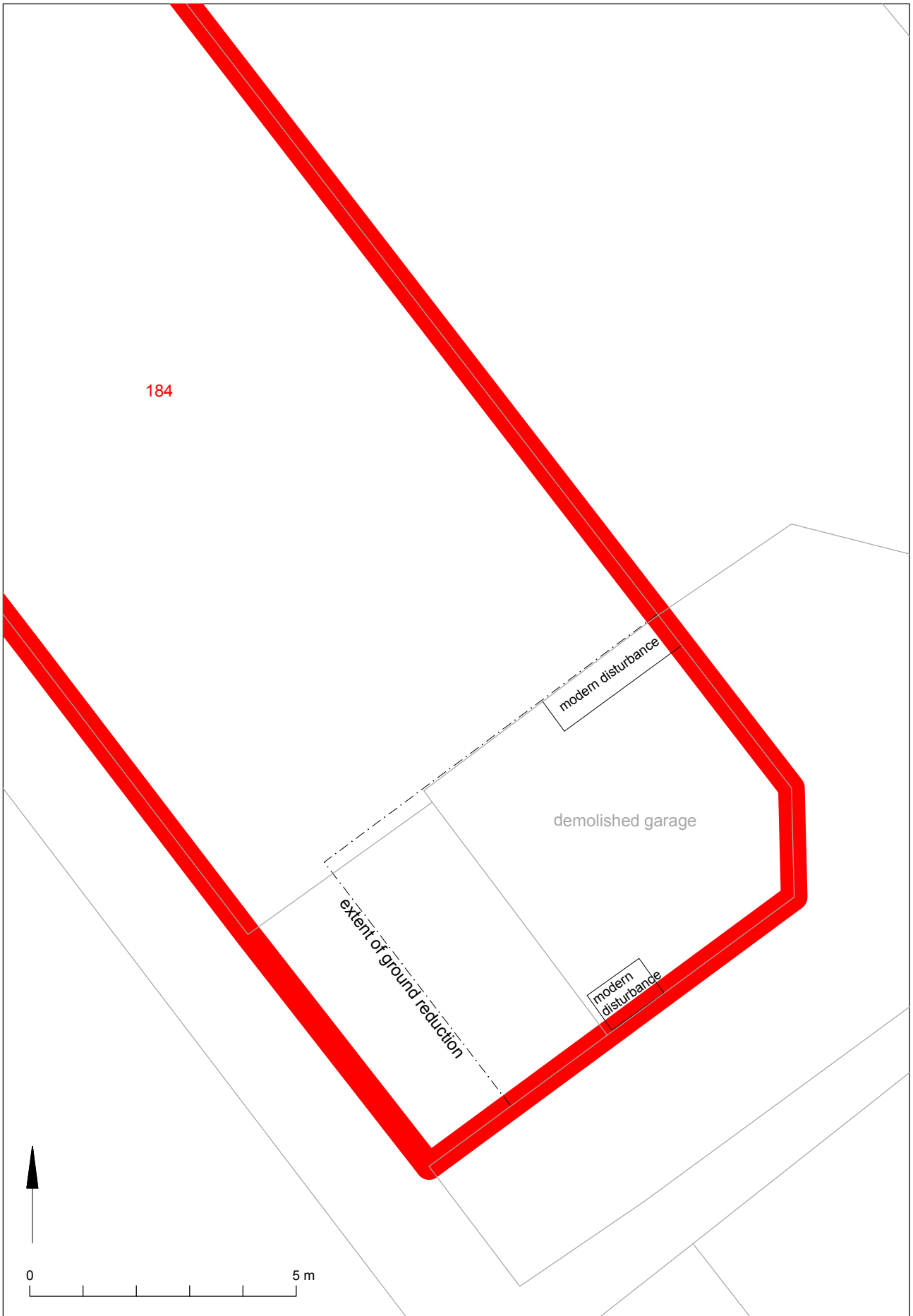


Fig 2 Results

## Essex Historic Environment Record/ Essex Archaeology and History

### Summary sheet

<b>Address:</b> 184 Maldon Road, Colchester, Essex, CO3 3AY	
<b>Parish:</b> Colchester	<b>District:</b> Colchester
<b>NGR:</b> TL 98685 24342 (centre)	<b>Site code:</b> CAT project ref.: 18/11e CHER ref: ECC4280 OASIS ref: colchest3-333286
<b>Type of work:</b> Monitoring	<b>Site director/group:</b> Colchester Archaeological Trust
<b>Date of work:</b> 22nd to 23rd November 2018	<b>Size of area investigated:</b> 0.04ha
<b>Location of curating museum:</b> Colchester museum accession code COLEM: 2018.113	<b>Funding source:</b> Owner
<b>Further seasons anticipated?</b> no	<b>Related CHER/SMR number:</b> MCC481, MCC1451, MCC1505, MCC1901, MCC2436, MCC2501, MCC2765, MCC2799, MCC2800, MCC2801, MCC5549, MCC7525, MCC7526, MCC7527, MCC7528, MCC7529, MCC7647, MCC7686, MCC10199, MCC10200
<b>Final report:</b> CAT Report 1356	
<b>Periods represented:</b> -	
<b>Summary of fieldwork results:</b>  Archaeological monitoring was carried out at 184 Maldon Road, Colchester, Essex, during groundworks for the replacement of an existing garage with a new one. Despite being located in an area of archaeological interest, no archaeological remains were encountered.	
<b>Previous summaries/reports:</b> none	
<b>CBC monitor:</b> Jess Tipper	
<b>Keywords:</b> –	<b>Significance:</b> none
<b>Author of summary:</b> Dr Elliott Hicks	<b>Date of summary:</b> January 2018

# **Written Scheme of Investigation (WSI) for continuous archaeological recording at 184 Maldon Road, Colchester, Essex, CO3 3AY.**

**NGR:** TL 98685 24342 (centre)

**Planning references:** 181949

**Commissioned by and on behalf of:** Katherine Lord

**Curating museum:** Colchester

**Museum accession code:** COLEM:2018.113

**CHER number:** ECC4280

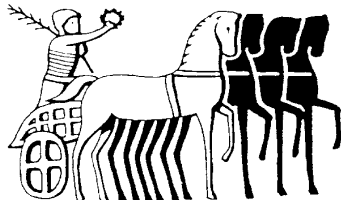
**CAT project code:** 2018/11e

**OASIS project number:** colchest3-333286

**Site manager:** Chris Lister

**CBC monitor:** Jess Tipper

**This WSI written:** 09/11/2018



COLCHESTER ARCHAEOLOGICAL TRUST,  
Roman Circus House,  
Roman Circus Walk,  
Colchester,  
Essex, CO2 7GZ

*tel:* 01206 501785

*email:* [eh@catuk.org](mailto:eh@catuk.org)

## Site location and description

The proposed development site lies approximately 1.2km southwest of main Colchester town centre at 184 Maldon Road, Colchester, Essex, CO3 3AY (Fig 1). The area to be developed is at the rear of the garden facing onto Constantine Road. Site centre is NGR TL 986685 24342.

## Proposed work

The development comprises the replacement of an existing garage with a new one and any associated groundworks.

## Archaeological background

The following archaeological background draws on the major published sources for Colchester archaeology and the Colchester Historic Environment Record (accessed via Colchester Heritage Explorer (<https://colchesterheritage.co.uk/map>)).

The proposed development lies within an area of high archaeological potential, specifically, within an area of Roman cemeteries. Approximately 700m to the northeast of the site over 700 Roman inhumations were excavated in the 1970s and 1980s in advance of the construction of the Police station on Butt Road (CHER MCC481, CAR 9, 4-202). Eighteen Roman inhumation burials were also excavated in 1971 on the west side of the Maldon Road roundabout prior to the construction of Southway (CAR 9, 261). The Butt road burials form part of an area of Roman cemeteries originally termed 'the western cemetery' by Hull (1958), but more generally known as the Lexden cemetery (CHER MCC7525-9 and MCC7647, CAR 11).

In 1998 an evaluation and excavation was carried out at 47 Butt Road, 30m to the south of the Butt Road cemetery, (CAT Report 11 & 58, CHER MCC2799-MCC2801). The evaluation revealed a single inhumation with the subsequent excavation revealing a further three Roman inhumations, two in coffins. Two of the graves cut a very large early Roman feature, part of whose edge was observed in a later watching brief.

There have been a number of burial related finds spots recorded on the HER. Of most significance was a Roman cremation urn found on the corner of Maldon Road and Constantine Road (CHER MCC1505). There have also been Roman burials in Beaconsfield Avenue (CHER MCC1901, MCC2436 and MCC2501), and on Errington Road (CHER MCC1451, MCC7686).

To the east of the site CAT have undertaken a series of watching briefs, evaluations and excavations over the last 15 years as part of the Colchester Garrison Urban Village development. These revealed hundreds of Roman burials in two distinct cemetery areas to the northeast and east of the site (CAT Report 412 (Area J1 North CHER, MCC2765); CAT Report 1033 (Area H, CHER MCC10199-MCC10200)). Burials features range from the 1st-4th century AD and include inhumations, urned and unurned cremations, *bustum* and pyre sites, and evidence of at least one *mausoleum*. A Roman trackway bounded the cemetery area to the south, with the Roman circus (CHER MCC5549, Scheduled monument 35614, NHLE no.1021426) 740m to the northeast.

Approximately 400m to the southeast, on land formerly occupied Goojerat Barracks, CAT undertook an evaluation in 2007-8 (CAT Report 456) followed by an excavation in 2010 (CAT Report 588). The evaluation identified the presence of Late Iron Age and early Roman ditches in the configuration indicating a rectangular enclosure, possibly containing the remains of a robbed-out Roman building. The excavation focussed on this part of the site but predominantly multi-phased ditches forming a series of enclosures were seen. A trapezoidal enclosure contained a well, groups of pits, post-holes and beam slots, most likely forming part of a domestic structure.

## **Planning background**

A planning application was made to Colchester Borough Council in August 2018 (application No.181949) proposing a replacement garage.

As the site lies within an area highlighted by the CHER as having a high potential for archaeological deposits, an archaeological condition was recommended by the Colchester Borough Council Archaeological Advisor (CBCAA). The recommended archaeological condition is based on the guidance given in the *National Planning Policy Framework* (MHCLG 2018).

## **Requirement for work**

The required archaeological work is for continuous archaeological monitoring and recording of all groundworks. Details are given in a Project Brief written by CBCAA (CBC 2018).

Specifically:

The monitoring and recording is being undertaken to identify and record any surviving archaeological deposits that may exist on site.

If unexpected remains are encountered the CBCAA will be informed immediately and the CBCAA will decide if amendments to the brief are required to ensure adequate provision for archaeological recording.

## **General methodology**

All work carried out by CAT will be in accordance with:

- professional standards of the Chartered Institute for Archaeologists, including its *Code of Conduct* (CIfA 2014a, b)
- Standards and Frameworks published by East Anglian Archaeology (Gurney 2003, Medlycott 2011)
- relevant Health & Safety guidelines and requirements (CAT 2018)
- the Project Brief issued by the CBCAA (CBC 2018).

Professional CAT field archaeologists will undertake all specified archaeological work, for which they will be suitably experienced and qualified.

Notification of the supervisor/project manager's name and the start date for the project will be provided to CBCAA one week before start of work.

Unless it is the responsibility of other site contractors, CAT will study mains service locations and avoid damage to these.

At the start of work (immediately before fieldwork commences) an OASIS online record <http://ads.ahds.ac.uk/project/oasis/> will be initiated and key fields completed on Details, Location and Creators forms. At the end of the project all parts of the OASIS online form will be completed for submission to Essex Historic Environment Record (EHER). This will include an uploaded .PDF version of the entire report.

A unique HER event number will be obtained from the CBCAA prior to the commencement of fieldwork alongside a project or site code from the curating museum. This code will be used to identify the project archive when it is deposited at the curating museum.

## **Staffing**

The number of field staff for this project is estimated as follows: One CAT officer for the duration of the groundworks.

## **Monitoring methodology**

There will be sufficient on-site attendance by CAT staff to maintain a watch on all contractors' ground works to record, excavate or sample (as necessary) any archaeological features or deposits.

All topsoil removal and ground reduction will be done with a toothless bucket.

If archaeological features or deposits are uncovered, time will be allowed for these to be planned and recorded.

If any features or deposits uncovered are to be destroyed by the proposed development, time will be allowed for these features to be excavated by hand. This includes a 50% sample of discrete features (pits, etc), 10% of linear features (ditches, etc) and 100% of all complex features and burials (see Human Remains policy below).

Fast hand-excavation techniques involving (for instance) picks, forks and mattocks will not be used on complex stratigraphy.

A metal detector will be used to examine spoil heaps, and the finds recovered.

Individual records of excavated contexts, layers, features or deposits will be entered on pro-forma record sheets. Registers will be compiled of finds, small finds and soil samples.

### **Site surveying**

Normal scale for archaeological site plans and sections is 1:20 and 1:10 respectively, unless circumstances indicate that other scales would be more appropriate.

The site grid will be tied into the National Grid. Corners of excavation areas and trenches will be located by NGR coordinates.

### **Environmental sampling policy**

CAT has an arrangement with Val Fryer/Lisa Gray whereby any potentially rich environmental layers or features will be appropriately sampled as a matter of course, but only if they are datable. Any processing and reporting will be done by VF/LG. If any complex or outstanding deposits are encountered, VF/LG will be asked onto site to advise. EH Regional Adviser is available for further advice.

### **Human remains**

CAT follows the policy of leaving human remains *in situ* unless there is a clear indication that the remains are in danger of being compromised as a result of their exposure. If circumstances indicated it were prudent or necessary to remove remains from the site during the monitoring, the following criteria would be applied; if it is clear from their position, context, depth, or other factors that the remains are ancient, then normal procedure is to apply to the Department of Justice for a licence to remove them. In that case, conditions laid down by the license will be followed. If it seems that the remains are not ancient, then the coroner, the client, and CBCAA will be informed, and any advice and/or instruction from the coroner will be followed.

### **Photographic record**

Will include both general and feature-specific photographs, the latter with scale and north arrow. A photo register giving context number, details, and direction of shot will be prepared on site, and included in site archive.

### **Finds**

All significant finds will be retained.

All finds, where appropriate, will be washed and marked with site code and context number.

Matthew Loughton (CAT) normally writes our finds reports. Some categories of finds are automatically referred to other CAT specialists:

small finds, metalwork, coins, etc: Laura Pooley

animal bones (small groups): Alec Wade / Adam Wightman

flints: Adam Wightman

or to outside specialists:

animal bones (large groups) and human remains: Julie Curl (*Sylvanus*)

environmental processing and reporting: Val Fryer / Lisa Gray

conservation of finds: staff at Colchester Museum / Laura Ratcliffe (LR Conservation)

Other specialists whose opinion can be sought on large or complex groups include:

Roman brick/tile: Ernest Black / Ian Betts (MOLA)

Roman glass: Hilary Cool

Prehistoric pottery: Stephen Benfield / Paul Sealey / Nigel Brown

Other: EH Regional Adviser in Archaeological Science (East of England).

All finds of potential treasure will be removed to a safe place, and the coroner informed immediately, in accordance with the rules of the Treasure Act 1996. The definition of treasure is given in pages 3-5 of the Code of Practice of the above act. This refers primarily to gold or silver objects.

Requirements for conservation and storage of finds will be agreed with the appropriate museum prior to the start of work, and confirmed to CBCAA.

## Results

Notification will be given to CBCAA when the fieldwork has been completed.

An appropriate archive will be prepared to minimum acceptable standards outlined in *Management of Research Projects in the Historic Environment* (English Heritage 2006).

The report will be submitted within 6 months of the end of fieldwork, with a copy supplied to CBCAA as a PDF.

The report will contain:

- Location plan of the groundworks in relation to the proposed development. At least two corners of the site will be given 10 figure grid references.
- Section/s drawings showing depth of deposits from present ground level with Ordnance Datum, vertical and horizontal scale.
- Archaeological methodology and detailed results including a suitable conclusion and discussion and results referring to Regional Research Frameworks (Medlycott 2011).
- All specialist reports or assessments
- A concise non-technical summary of the project results.

An EHER summary sheet will also be completed within four weeks and supplied to CBCAA.

Results will be published, to at least a summary level (i.e. round-up in *Essex Archaeology & History*) in the year following the archaeological field work. An allowance will be made in the project costs for the report to be published in an adequately peer reviewed journal or monograph series

## Archive deposition

It is a policy of Colchester Borough Council that the integrity of the site archive be maintained (i.e. all finds and records should be properly curated by a single organisation), with the archive available for public consultation. To achieve this desired aim it is assumed that the full archive will be deposited in Colchester Museums *unless otherwise agreed in advance*. (A full copy of the archive shall in any case be deposited).

**By accepting this WSI, the client agrees to deposit the archive, including all artefacts, at Colchester & Ipswich Museum.**

The requirements for archive storage will be agreed with the curating museum.

If the finds are to remain with the landowner, a full copy of the archive will be housed with the curating museum and provision must be made for additional recording (e.g. photography, illustration and analysis) as appropriate.

The archive will be deposited with Colchester & Ipswich Museum or an alternate repository (approved by COLEM and CBCAA) within 3 months of the completion of the final publication report, with a summary of the contents of the archive supplied to CBCAA.

## Monitoring

CBCAA will be responsible for monitoring progress and standards throughout the project, and will be kept regularly informed during fieldwork, post-excavation and publication stages.

Notification of the start of work will be given to CBCAA one week in advance of its commencement.

Any variations in this WSI will be agreed with CBCAA prior to them being carried out.

CBCAA will be notified when the fieldwork is complete.

The involvement of CBCAA shall be acknowledged in any report or publication generated by this project.

## References

Note: all CAT reports, except for DBAs, are available online in PDF format at <http://cat.essex.ac.uk>

- |                  |       |  |
|------------------|-------|--|
| Brown, D         | 2007  | <i>Archaeological Archives: A guide to best practice in creation, compilation, transfer and curation</i>   |
| CAR 9            | 1993  | <i>Colchester Archaeological Report 9: Excavations of Roman and later cemeteries, churches and monastic sites in Colchester, 1971-85 by N Crummy, P Crummy &amp; C Crossan</i>   |
| CAR11            | 1995  | <i>Colchester Archaeological Report 11: Camulodunum II</i> , by CFC Hawkes and P Crummy  |
| CAT              | 2018  | <i>Health &amp; Safety Policy</i>  |
| CAT Report 11    | 1997  | <i>An Archaeological evaluation at 47 Butt Road Colchester</i> by S Benfield   |
| CAT Report 58    | 1998  | <i>An excavation at 47 Butt Road Colchester</i> by S Benfield  |
| CAT Report 412   | 2011  | <i>Report on the archaeological investigations carried out on Areas C1, C2, E, J1, O, Q and S1 of the Alienated Land, Colchester Garrison, including the Time Team trenches and the Alienated Land watching brief: May 2004-January 2005</i> |
| CAT Report 456   | 2008  | <i>Stage 1b archaeological evaluation, Alienated Land Area L/N, Colchester Garrison, Colchester, Essex: October 2007</i> . By H Brooks and B Holloway  |
| CAT Report 588   | 2012  | <i>Stage 2 archaeological excavation, Alienated Land Area L/N (former Goojerat Barracks), Colchester Garrison, Colchester, Essex: June-July 2010</i> . By H Brooks and B Holloway  |
| CAT Report 1033  | 2011  | <i>Roman burials: Archaeological excavation (Stage 2) on Colchester Garrison 'Alienated Land' Area H, off Butt Road, Colchester, Essex, CO3 2DL September 2012 – February 2013</i> . By L Pooley   |
| CBCAA            | 2018  | <i>Brief for continuous archaeological monitoring and recording at 184 Maldon Road, Colchester, CO3 3AY</i> . By J Tipper  |
| CIfA             | 2014a | <i>Standard and Guidance for an archaeological watching brief</i>  |
| CIfA             | 2014b | <i>Standard and guidance for the collection, documentation, conservation and research of archaeological materials</i>  |
| English Heritage | 2006  | <i>Management of Research Projects in the Historic Environment (MoRPHE)</i>  |
| Gurney, D        | 2003  | <i>Standards for field archaeology in the East of England</i> . East Anglian Archaeology Occasional Papers 14 (EAA 14).  |



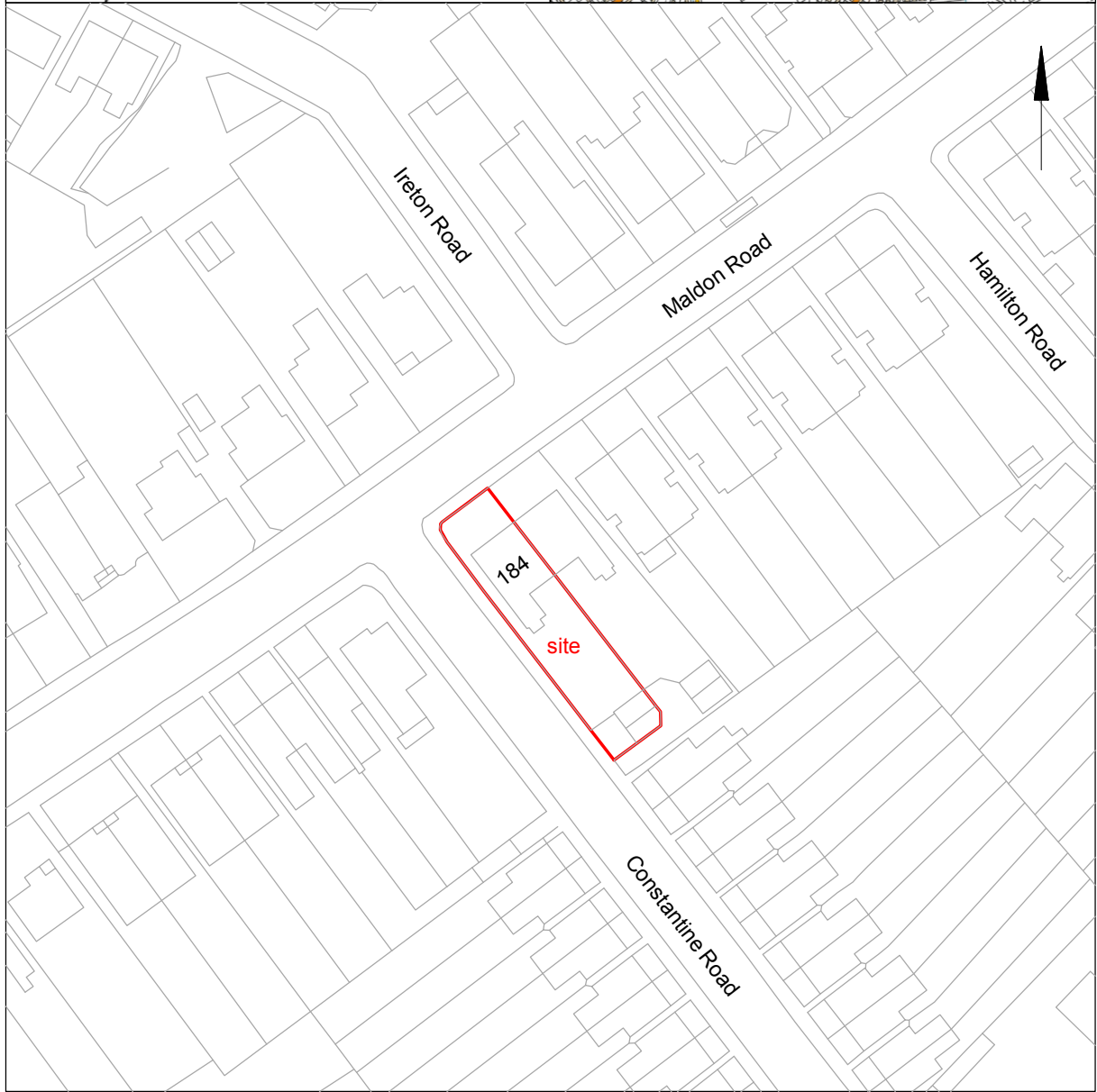
Hull, M R	1958	<i>Roman Colchester, RRCSAL, 2</i>
Medlycott, M	2011	<i>Research and archaeology revisited: A revised framework for the East of England.</i> East Anglian Archaeology Occasional Papers 24 (EAA <b>24</b> )
MHCLG	2018	<i>National Planning Policy Framework.</i> Ministry of Housing, Communities and Local Government.

E Holloway



Colchester Archaeological Trust  
Roman Circus House  
Roman Circus Walk  
Colchester  
Essex  
CO2 2GZ

tel: 01206 501785  
email: [eh@catuk.org](mailto:eh@catuk.org)



© Crown copyright. All rights reserved. Licence number 100039294.

Fig 1 Site location.



# OASIS DATA COLLECTION FORM: England

[List of Projects](#) | [Manage Projects](#) | [Search Projects](#) | [New project](#) | [Change your details](#) | [HER coverage](#) | [Change country](#) | [Log out](#)

[Printable version](#)

**OASIS ID: colchest3-333286**

## Project details

Project name	Archaeological monitoring at 184 Maldon Road, Colchester, Essex, CO3 3AY
Short description of the project	Archaeological monitoring was carried out at 184 Maldon Road, Colchester, Essex, during groundworks for the replacement of an existing garage with a new one. Despite being located in an area of archaeological interest, no archaeological remains were encountered.
Project dates	Start: 22-11-2018 End: 23-11-2018
Previous/future work	No / Not known
Any associated project reference codes	2018/11e - Contracting Unit No.
Any associated project reference codes	181949 - Planning Application No.
Any associated project reference codes	ECC4280 - HER event no.
Any associated project reference codes	COLEM: 2018.113 - Museum accession ID
Type of project	Recording project
Site status	None
Current Land use	Other 3 - Built over
Monument type	N/A None
Significant Finds	N/A None
Investigation type	"Watching Brief"
Prompt	Planning condition

## Project location

Country	England
Site location	ESSEX COLCHESTER COLCHESTER 184 Maldon Road, Colchester
Postcode	CO3 3AY
Study area	0.04 Hectares
Site coordinates	TL 98685 24342 51.881660389943 0.887119734208 51 52 53 N 000 53 13 E Point

## Project creators

Name of Organisation	Colchester Archaeological Trust
Project brief originator	CBC Archaeological Officer
Project design originator	Emma Holloway
Project director/manager	Chris Lister
Project supervisor	Adam Tuffey
Type of sponsor/funding body	Owner

## Project archives

Physical Archive Exists?	No
Digital Archive recipient	Colchester Museum
Digital Archive ID	COLEM: 2018.113
Digital Contents	"other"
Digital Media available	"Images raster / digital photography","Survey","Text"
Paper Archive recipient	Colchester Museum
Paper Archive ID	COLEM: 2018.113

Paper Contents "other"  
Paper Media available "Context sheet","Miscellaneous Material","Photograph","Plan","Report","Section"

**Project  
bibliography 1**

Publication type Grey literature (unpublished document/manuscript)  
Title Archaeological monitoring at 184 Maldon Road, Colchester, Essex, CO3 3AY: November 2018  
Author(s)/Editor(s) Hicks, E.  
Other bibliographic details CAT Report 1356  
Date 2018  
Issuer or publisher Colchester Archaeological Trust  
Place of issue or publication Colchester  
Description A4 ring-bound loose leaf  
URL <http://cat.essex.ac.uk/all-reports.html>  
  
Entered by Laura Pooley (lp@catuk.org)  
Entered on 4 January 2019

**OASIS:**

Please e-mail [Historic England](#) for OASIS help and advice  
© ADS 1996-2012 Created by [Jo Gilham](#) and [Jen Mitcham](#), email Last modified Wednesday 9 May 2012  
Cite only: <http://www.oasis.ac.uk/form/print.cfm?id=338084> for this page

[Cookies](#) [Privacy Policy](#)