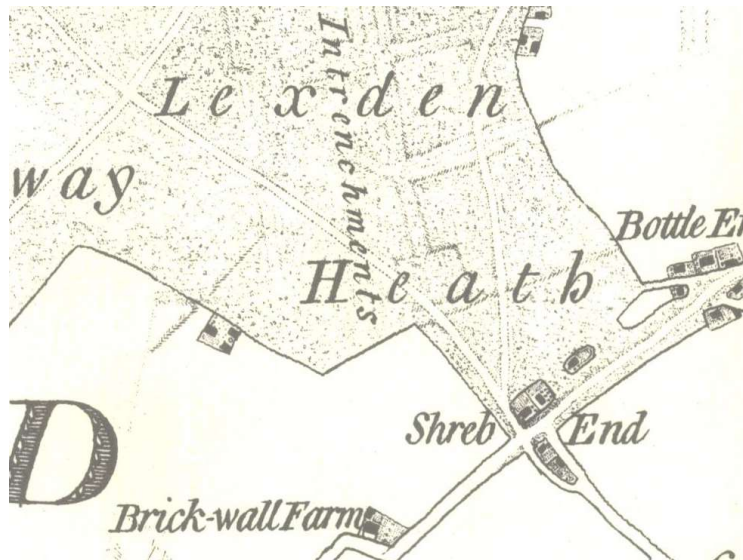


# Archaeological evaluation at International House, Moss Road, Stanway, Colchester, Essex, CO3 0JL

November 2019



by **Dr Elliott Hicks**

figures by Chris Lister, Ben Holloway and Sarah Carter

fieldwork by Ben Holloway with Bronagh Quinn

**commissioned by David Rose (DG Rose Ltd)**

NGR: TL 9619 2368 (centre)  
Planning ref.: 180886  
CAT project ref.: 19/10m  
ECC code: ECC4395  
OASIS ref.: colchest3-371997



**Colchester Archaeological Trust**

Roman Circus House,  
Roman Circus Walk,  
Colchester,  
Essex, CO2 7GZ

tel.: 01206 501785  
email: [eh2@catuk.org](mailto:eh2@catuk.org)

**CAT Report 1498**  
November 2019

## Contents

1	Summary	1
2	Introduction	1
3	Archaeological background	1
4	Aim	3
5	Results	3
6	Finds	4
7	Conclusion	4
8	Acknowledgements	4
9	References	4
10	Abbreviations and glossary	5
11	Contents of archive	5
12	Archive deposition	5

Figures after p6

CAT wsi  
OASIS summary sheet

## List of photographs, maps and figures

Cover: extract from Chapman and André's map of Essex (1777)

Photograph 1 Trench shot, looking north 3

Map 1 Extract of the general map of Colchester showing the locations of earthworks and excavations discussed in **CAR 11** 2

Fig 1 Site location and trench layout in relation to proposed development

Fig 2 Evaluation results

Fig 3 Representative section

## 1 Summary

*An archaeological evaluation (one trial-trench) was carried out at International House, Moss Road, Stanway, Colchester, Essex in advance of the construction of a residential development of ten units with an associated amenity area, services and parking. The site lies next to Gryme's Dyke, one of a series of earthworks which define the Late Iron Age oppidum of Camulodunum. Despite being located in an archaeologically-sensitive area, only a modern concrete footing was uncovered.*

## 2 Introduction (Fig 1)

This is the archive report for an archaeological evaluation at International House, Moss Road, Stanway, Colchester, Essex which was carried out on 7th November 2019. The work was commissioned by David Rose of DG Rose Ltd in advance of the construction of a residential development of ten units with an associated amenity area, services and parking, and was carried out by Colchester Archaeological Trust (CAT).

As the site lies within an area highlighted by the EHER/CHER as having a high potential for archaeological deposits, an archaeological condition was recommended by the Colchester Borough Council Archaeological Advisor (CBCAA). This recommendation was for an archaeological evaluation by trial-trenching and was based on the guidance given in the *National Planning Policy Framework* (MHCLG 2019).

All archaeological work was carried out in accordance with a *Brief for an Archaeological Trial Trenched Evaluation*, detailing the required archaeological work, written by Jess Tipper (CBCAA 2019), and a written scheme of investigation (WSI) prepared by CAT in response to the brief and agreed with ECCPS (CAT 2019).

In addition to the brief and WSI, all fieldwork and reporting was done in accordance with English Heritage's *Management of Research Projects in the Historic Environment (MoRPHE)* (English Heritage 2006), and with *Standards for field archaeology in the East of England* (EAA 14 and 24). This report mirrors standards and practices contained in the Institute for Archaeologists' *Standard and guidance for archaeological field evaluation* (CIfA 2014a) and *Standard and guidance for the collection, documentation, conservation and research of archaeological materials* (CIfA 2014b).

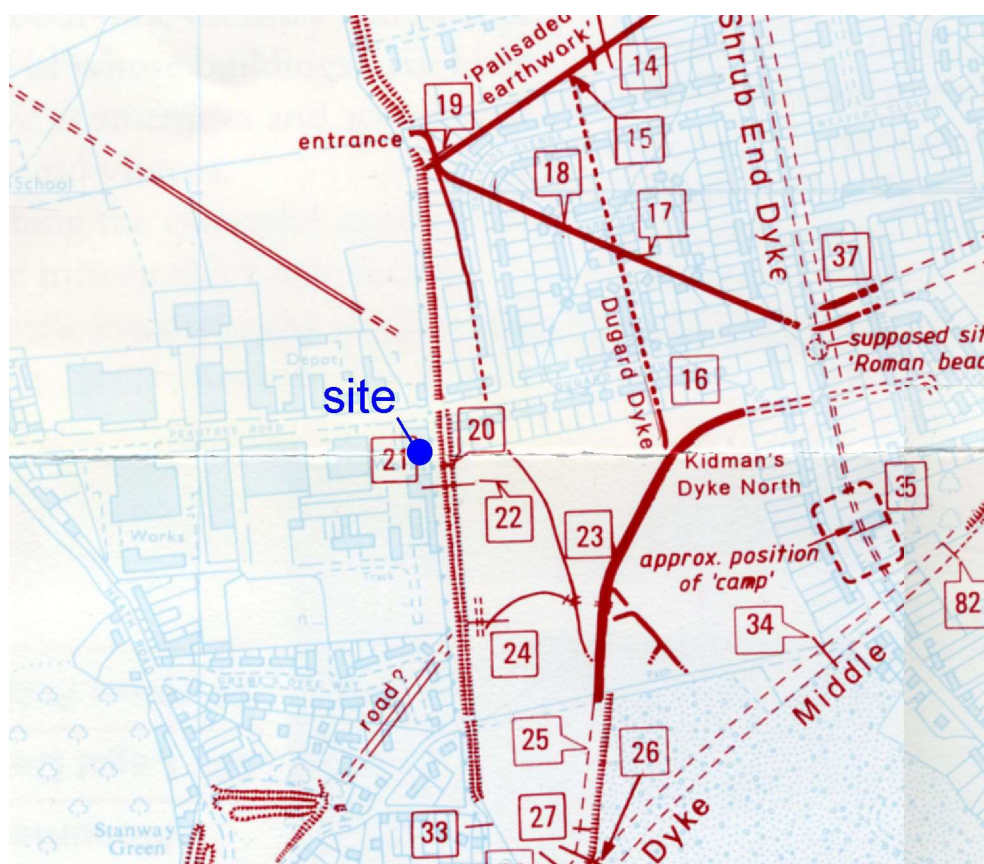
## 3 Archaeological background

The following archaeological background is based on the Colchester Archaeological Trust report archive and the Colchester Historic Environment Record (CHER, ECCMCC numbers) accessed via the Colchester Heritage Explorer ([www.colchesterheritage.co.uk](http://www.colchesterheritage.co.uk)):

The proposed development is situated within an archaeologically-significant area. It lies adjacent to Gryme's Dyke (MCC7464 & MCC8081). The Colchester dykes and earthworks are among the most important prehistoric monuments in Britain. They define the extent of the pre-Roman 'proto-town' (or *oppidum* in Latin) of *Camulodunum*.

*Camulodunum* was the capital and home of Cunobelin, who was arguably of the most important leader in Britain in the decades leading up to the Roman invasion of AD 43.

There have been several studies of and excavations on the dykes, which are described fully in the two principal reference works: *Camulodunum*, by CFC Hawkes and MR Hull (1947), and *Camulodunum 2, Colchester Archaeological Report 11 (CAR 11)*, by CFC Hawkes and Philip Crummy (1995).



**Map 1** Extract of the general map of Colchester showing the locations of earthworks and excavations discussed in CAR 11 (Fig 6.1), current site is labelled blue

Gryme's dyke is the outermost, longest and latest of all the dykes on the western side of the town. Gryme's Dyke faced westwards and took the form of a deep V-shaped ditch with a steep earth bank behind it. The dyke can be divided into three distinct sections on topographical grounds, i.e. Gryme's Dyke North, South and Middle (CAR 11, 27-9). The dyke survives for much of its length as a visible but badly damaged and denuded earthwork. The current site is located adjacent to an area named in CAR 11 as Gryme's Dyke Middle. Excavation work between 1946-1958 (labelled 19 on map 1 above) revealed there was an entrance through Gryme's Dyke and looked at the relationship between Gryme's Dyke, the palisaded earthwork, and the Laver ditch (for full discussion see CAR 11, 27-29, 59-61 and 109). At location 20 on Map 1 CAT excavated part of a section across Gryme's Dyke in 1976. Part of the rampart was removed to construct a footpath. Only part of the base of eastern end of the rampart survived. A series of small shallow features cut into the cover loam were revealed. These features pre-date the bank, and evidence activity in the area of the current site prior to the construction of the dyke (CAR 11, 109-110).

To the south of the site is the nationally important Late Iron Age and Roman complex at Gosbecks (Scheduled Monument NHLE no. 1002180; MCC7470) which is known from aerial photographs, geophysical surveys, and excavations (Hull 1958, 259-71; CAR 11, 95-105; CAT Report 30, 45 and 127). Archaeological remains at Gosbecks include: dykes, droeways and field systems; a large enclosure which may be Cunobelin's farmstead (MCC7044); a small Roman fort of probable Claudian date (MCC7472); a Romano-British temple (MCC2849), surrounded by a monumental portico (MCC7043); a Roman theatre (MCC2831); a Roman watermain, possibly leading to a bath-house (MCC2903); and a road leading to the walled Roman town (MCC2529). Many of these remains are located within Gosbecks Archaeological Park.

To the west southwest, CAT has carried out a number of evaluations and excavations in advance of development around Fiveways Fruit Farm on both sides of Dyers Road (CAT Reports 506, 996, 1042, 1070 and 1221). An excavation in 2015 revealed extensive Middle Iron Age settlement (mid 4th to late 1st century BC) comprising of two interlinked enclosed farmsteads and an associated field system with stock control enclosures. Small-scale Neolithic, Bronze Age and Early Iron Age activity was evident in the form of worked flints and pottery sherds recovered from tree-throws and pits. Field boundary ditches, pits and tree-throws representing medieval, post-medieval and modern agricultural activity were also found across the site (CAT Report 1070).

Just to the south of the Fiveways Fruit Farm site, between 1987 and 2003 CAT excavated the Stanway Quarry elite burial site prior to the extraction of sands and gravel aggregates (CHER MCC8095). An Iron Age farmstead and four Late Iron Age funerary enclosures of high-status individuals of the Catuvellaunian family were excavated. The remains of two wooden chambers richly adorned with finds including pottery, weapons and game boards known as the 'Warriors burial' and the 'Doctor's burial' are nationally recognised for their significance (Crummy *et al*, 2007).

#### 4 Aim

The aims of the archaeological evaluation were to record the extent of any surviving archaeological deposits and to assess the archaeological potential of the site to allow the CBCAA to determine if further investigation is required.

#### 5 Results (Figs 2-3)

One trial-trench, 20m long by 1.8m wide, was machine-excavated under the supervision of a CAT archaeologist. It was excavated through modern tarmac and associated hardcore (L1, 0.19-0.2m thick), a layer of modern made ground (L2, c 0.27-0.32m thick, friable, moist dark grey/brown silty-clay), a further layer of modern made ground (L3, 0.37-0.45m thick, soft, medium orange clayey-sand) and another layer of modern made ground (L4, 0.38-0.43m thick, firm, moist medium grey/brown silty-clay) onto natural (L5, soft, moist medium yellow/orange sand with 25% gravel, encountered at a depth of 1.32m below current ground level). A sondage was excavated to ensure that the natural had been reached.

Modern concrete footing F1 was uncovered at the southern end of the trench.



**Photograph 1** Trench shot – looking north

## 6 Finds

There were no finds.

## 7 Conclusion

Despite being located in an archaeologically-sensitive area, only a modern concrete footing was recorded during evaluation at this site.

## 8 Acknowledgements

CAT thanks David Rose of DG Rose Ltd for commissioning and funding the work. The project was managed by C Lister, fieldwork was carried out by B Holloway with B Quinn. Figures are by C Lister, B Holloway and S Carter. The project was monitored for Colchester Borough Council by Jess Tipper.

## 9 References

Note: all CAT reports, except for DBAs, are available online in PDF format at <http://cat.essex.ac.uk>

- |                     |       |   |
|---------------------|-------|---|
| Brown, D            | 2011  | <i>Archaeological Archives: A guide to best practice in creation, compilation, transfer and curation</i>  |
| CAR 11              | 1995  | <i>Colchester Archaeological Report 11: Camulodunum 2</i> , by CFC Hawkes and P Crummy  |
| CAT                 | 2018  | <i>Health &amp; Safety Policy</i>   |
| CAT Report 30       | 1998  | <i>Gosbecks Archaeological Park, Colchester: an archaeological evaluation of the north-west area</i> , by S Benfield  |
| CAT Report 45       | 1999  | <i>Excavation at Gosbecks Archaeological Park: July-August 1999</i> , by C Austin   |
| CAT Report 127      | 2008  | <i>Excavations of Late Iron Age and Roman features and a Roman road north of Gosbecks Archaeological Park, Colchester, Essex 1995-1996</i> , by S Benfield                                  |
| CAT Report 312      | 2005  | <i>Excavations at Abbotstone field, Bell House Pit, Tarmac Colchester Quarry, Warren Lane, Stanway, Essex: 1999-2001</i> , by L Pooley  |
| CAT Report 493      | 2009  | <i>An archaeological evaluation at Fiveways Fruit Farm, Dyer's Road, Stanway, Colchester, Essex: September-October 2008</i> , by B Holloway & H Brooks                                      |
| CAT Report 506      | 2009  | <i>A desk-based assessment of the archaeological remains on and around a proposed development site at Stanway, Colchester, Essex: March 2009</i> , by H Brooks                              |
| CAT Report 996      | 2016  | <i>A desk-based assessment of the archaeological remains on and around a site at Fiveways Fruit Farm, Stanway, Essex</i> , by H Brooks  |
| CAT Report 1042     | 2016  | <i>Archaeological evaluation on Phase 1 land at Fiveways Fruit Farm, Dyer's Road, Stanway, Essex, CO3 0QR: November 2016</i> , by L Pooley  |
| CAT Report 1070     | 2019  | <i>Middle Iron Age farmsteads: Archaeological excavation on land at Fiveways Fruit Farm, Dyers Road, Stanway, Essex, CO3 0QR: May-December 2015</i> , by P Parmenter, A Wightman & L Pooley |
| CAT Report 1221     | 2018  | <i>Archaeological excavation on Phase 1 land at Fiveways Fruit Farm, Stanway, Essex – January 2018</i> , by L Pooley  |
| CAT Report 1289     | 2018  | <i>Archaeological evaluation on land at Warren Lane, Stanway, Colchester, Essex, CO3 0NW: June 2018</i> , by E Hicks  |
| Crummy, C et al     | 2007  | <i>Stanway: an elite burial site at Camulodunum. Britannia Monograph Series 24</i>  |
| CBCAA               | 2019  | <i>Brief for an Archaeological Trial Trench Evaluation International House, Moss Road, Stanway, CO3 0JL</i> , by J Tipper   |
| CIfA                | 2014a | <i>Standard and Guidance for archaeological evaluation</i>  |
| CIfA                | 2014b | <i>Standard and guidance for the collection, documentation, conservation and research of archaeological materials</i>   |
| Gurney, D           | 2003  | <i>Standards for field archaeology in the East of England. East Anglian Archaeology Occasional Papers 14 (EAA 14)</i>   |
| Hawkes, C & Hull MR | 1947  | <i>Camulodunum, first report on the excavations at Colchester 1930-39, RRCSAL, 14</i>   |

Historic England	2015a	<i>Digital Image capture and File Storage: Guidelines for best practice</i> , by S Cole & P Backhouse
Historic England	2015b	<i>Management of Research Projects in the Historic Environment (MoRPHE)</i>
Historic England	2018	<i>The Role of the Human Osteologist in an Archaeological Fieldwork Project</i> , by S Mays, M Brickley & J Sidell
Medlycott, M	2011	<i>Research and archaeology revisited: A revised framework for the East of England</i> . East Anglian Archaeology Occasional Papers 24 (EAA 24)
MHCLG	2019	<i>National Planning Policy Framework</i> . Ministry of Housing, Communities and Local Government

## 10 Abbreviations and glossary

Bronze Age	period from c 2500 – 700 BC
CAT	Colchester Archaeological Trust
CBC	Colchester Borough Council
CBCAA	Colchester Borough Council Archaeological Advisor
CBM	ceramic building material, ie brick/tile
CHER	Colchester Historic Environment Record
CIfA	Chartered Institute for Archaeologists
context	specific location of finds on an archaeological site
EHHER	Essex Historic Environment Record
feature (F)	an identifiable thing like a pit, a wall, a drain: can contain 'contexts'
Iron Age	period from 700 BC to Roman invasion of AD 43
layer (L)	distinct or distinguishable deposit (layer) of material
medieval	period from AD 1066 to c 1500
modern	period from c AD 1800 to the present
natural	geological deposit undisturbed by human activity
Neolithic	period from c 4000 – 2500 BC
NGR	National Grid Reference
OASIS	<b>O</b> nline <b>A</b> ccess to the <b>I</b> ndex of <b>A</b> rchaeological <b>I</b> nvestigations, <a href="http://oasis.ac.uk/pages/wiki/Main">http://oasis.ac.uk/pages/wiki/Main</a>
post-medieval	from c AD 1500 to c 1800
prehistoric	pre-Roman
Roman	the period from AD 43 to c AD 410
section	(abbreviation sx or Sx) vertical slice through feature/s or layer/s
wsi	written scheme of investigation

## 11 Contents of archive

**Finds:** n/a

### **Paper record**

One A4 document wallet containing:

The report (CAT Report 1498)

CBC evaluation brief, CAT written scheme of investigation

Original site record (trench sheet, section)

Site digital photos and log

### **Digital record**

The report (CAT Report 1498)

CBC evaluation brief, CAT written scheme of investigation

Site digital photographs, thumbnails and log

Graphic files

Survey data

## 12 Archive deposition

The paper and digital archive is currently held by the Colchester Archaeological Trust at Roman Circus House, Roman Circus Walk, Colchester, Essex CO2 7GZ, but will be permanently deposited with Colchester Museum under ref. no. ECC4395.

© Colchester Archaeological Trust 2019

**Distribution list:**

David Rose (DG Rose Ltd)  
Jess Tipper, Colchester Borough Council Planning Services  
Essex Historic Environment Record



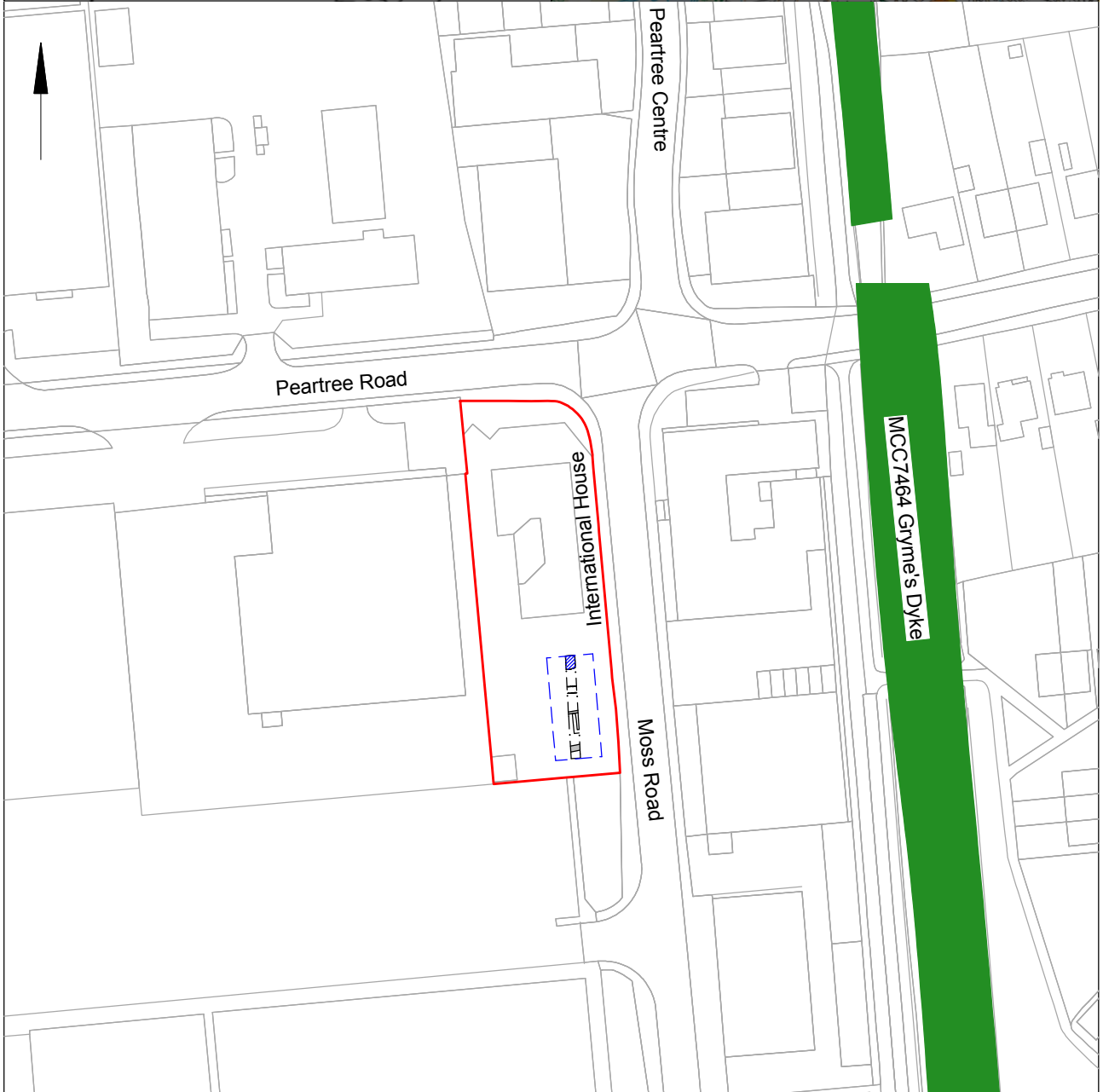
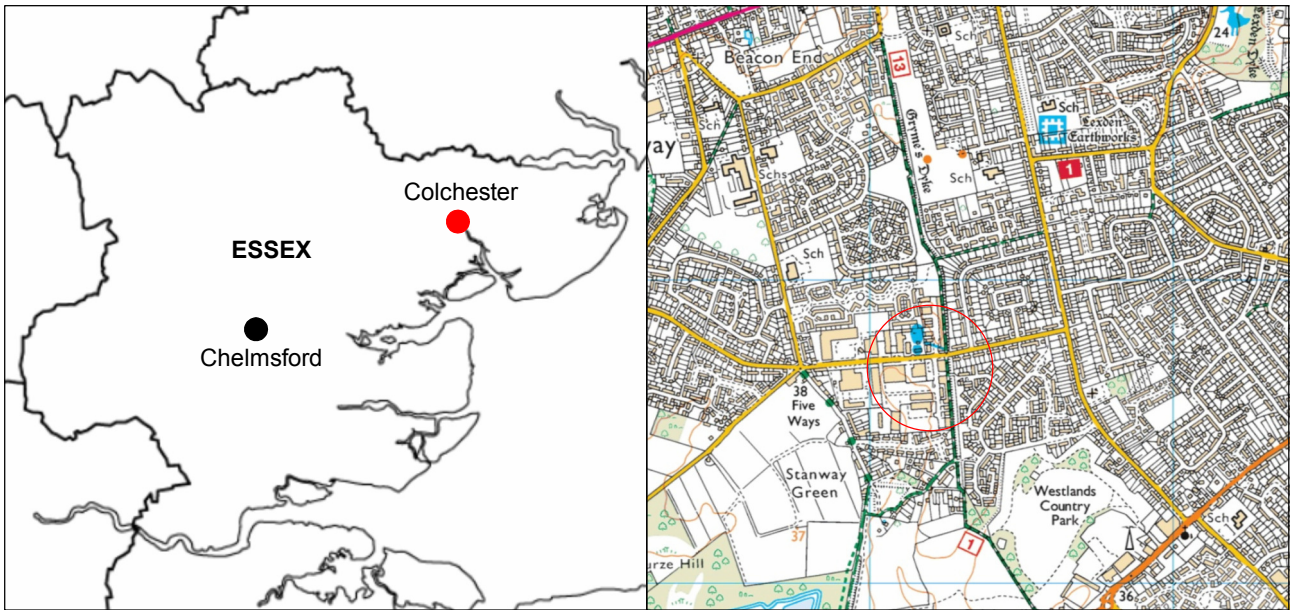
**Colchester Archaeological Trust**

Roman Circus House,  
Roman Circus Walk,  
Colchester,  
Essex, CO2 7GZ

tel.: 01206 501785  
email: [eh2@catuk.org](mailto:eh2@catuk.org)

Checked by: Philip Crummy  
Date: 14.11.2019





© Crown copyright. All rights reserved. Licence number 100039294.

Fig 1 Site location and trench layout in relation to proposed development (dashed blue line).



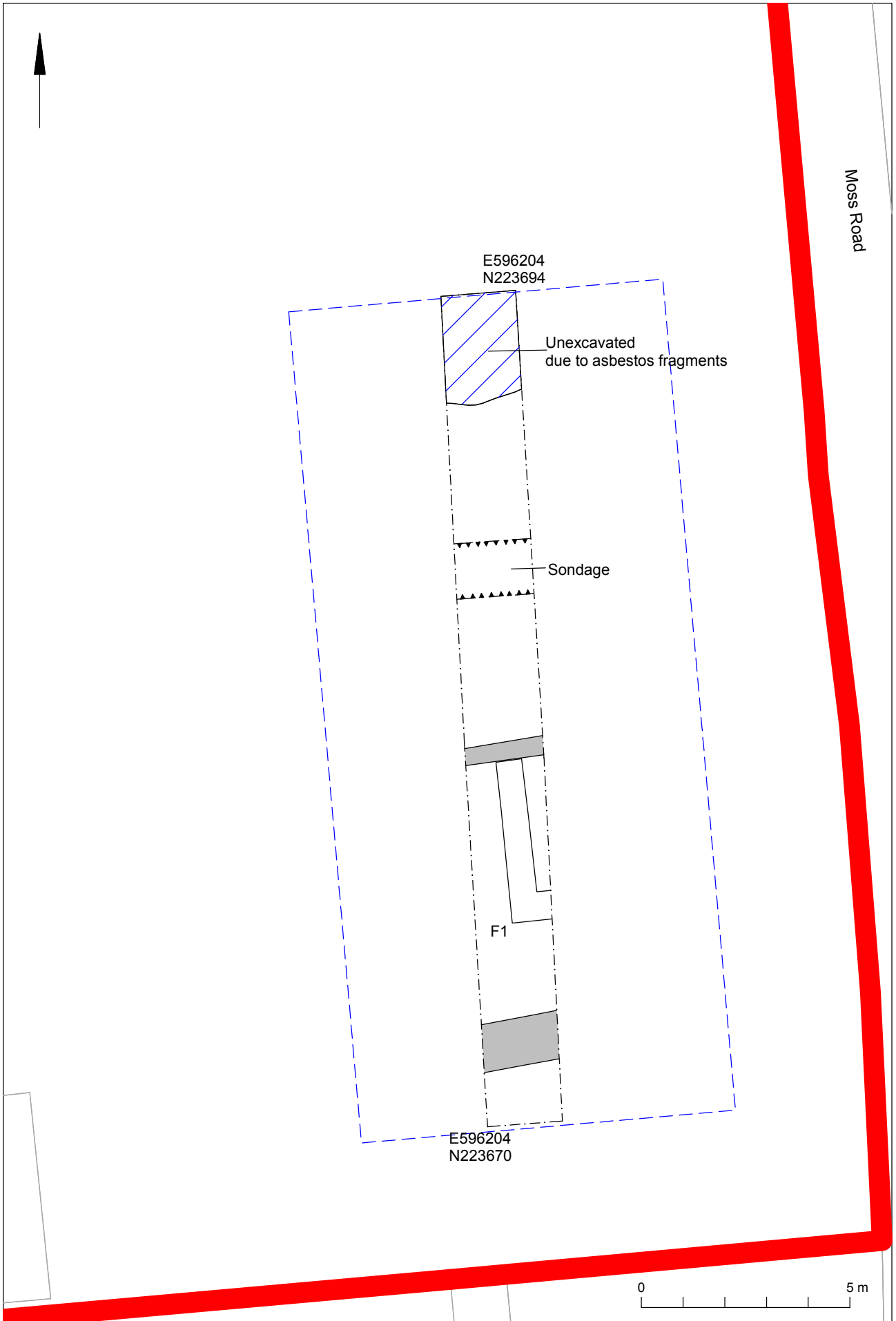


Fig 2 Evaluation results.

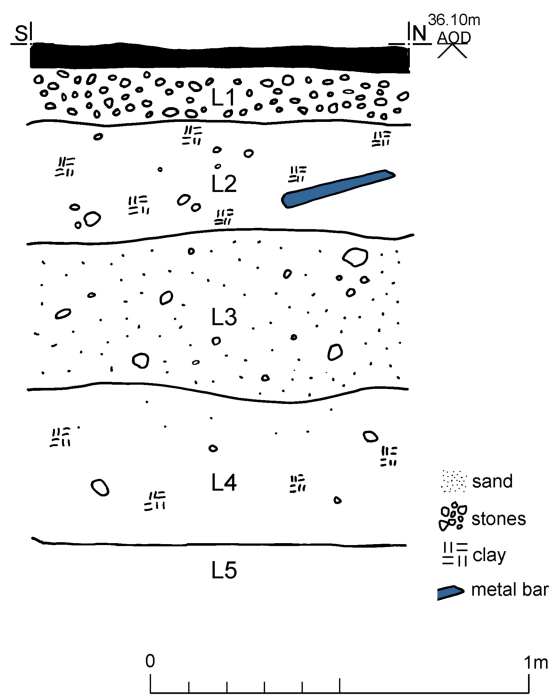


Fig 3 Representative section.

# Essex Historic Environment Record/ Essex Archaeology and History

## Summary sheet

<b>Address:</b> International House, Moss Road, Stanway, Colchester, Essex, CO3 3US	
<b>Parish:</b> Colchester	<b>District:</b> Colchester
<b>NGR:</b> TL 9619 2368 (centre)	<b>Site code:</b> CAT project ref.: 19/10m CHER ref: ECC4395 OASIS ref: colchest3-371997
<b>Type of work:</b> Evaluation	<b>Site director/group:</b> Colchester Archaeological Trust
<b>Date of work:</b> 7th November 2019	<b>Size of area investigated:</b> 0.18ha
<b>Location of curating museum:</b> Colchester museum	<b>Funding source:</b> Developer
<b>Further seasons anticipated?</b> Not known	<b>Related CHER/SMR number:</b> CHER MCC2529, MCC2831, MCC2849, MCC2903, MCC7043, MCC7044, MCC7464, MCC7470, MCC7472, MCC8081, MCC8095
<b>Final report:</b> CAT Report 1498	
<b>Periods represented:</b> Modern	
<b>Summary of fieldwork results:</b> <i>An archaeological evaluation (one trial-trench) was carried out at International House, Moss Road, Stanway, Colchester, Essex in advance of the construction of a residential development of ten units with an associated amenity area, services and parking. The site lies next to Gryme's Dyke, one of a series of earthworks which define the Late Iron Age oppidum of Camulodunum. Despite being located in an archaeologically-sensitive area, however, only a modern concrete footing was uncovered.</i>	
<b>Previous summaries/reports:</b> None	
<b>CBC monitor:</b> Jess Tipper	
<b>Keywords:</b> -	<b>Significance:</b> -
<b>Author of summary:</b> Dr Elliott Hicks	<b>Date of summary:</b> November 2019

# **Written Scheme of Investigation (WSI) for an archaeological evaluation by trial-trench at International House, Moss Road, Stanway, Colchester, Essex, CO3 0JL.**

**NGR:** TL 9619 2368 (centre)  
**District:** Colchester

**Planning reference:** 180886

**Commissioned by:** David Rose  
**On behalf of:** DG Rose Ltd

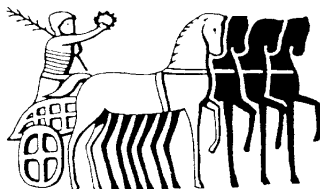
**Curating museum:** Colchester

**CHER project code:** ECC4395  
**CAT project code:** 2019/10m  
**Oasis project ID:** colchest3-371997

**Site manager:** Chris Lister

**CBC monitor:** Jess Tipper

**This WSI written:** 29/10/2019



COLCHESTER ARCHAEOLOGICAL TRUST,  
Roman Circus House,  
Roman Circus Walk,  
Colchester,  
Essex, CO2 7GZ

*tel:* 01206 501785  
*email:* [eh@catuk.org](mailto:eh@catuk.org)

## Site location and description

The proposed development site lies approximately 3.7km south-west of the main historic centre of Colchester at International House, Moss Road, Stanway, Colchester, Essex, CO3 0JL (Fig 1). The site is centred on National Grid Reference (NGR) TL 9619 2368. The proposed residential development is a 0.6hectare plot to be built to the south of the existing building on an area previously used as a car park.

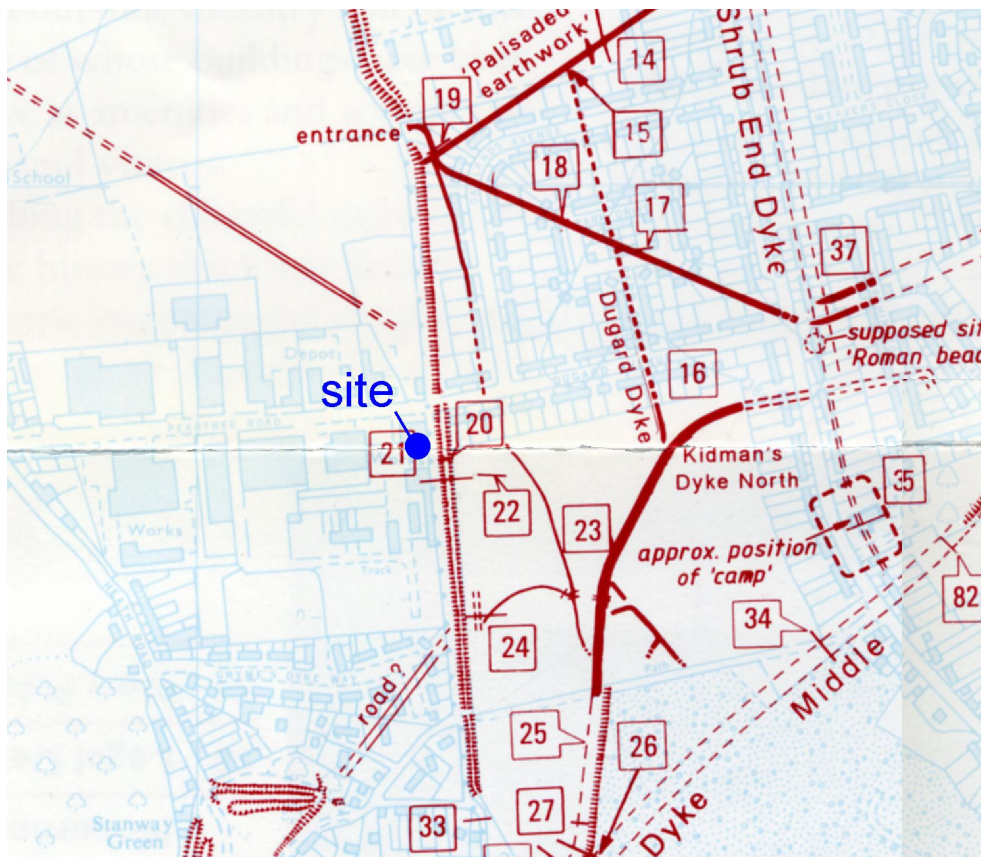
## Proposed work

The development comprises the construction of a residential development of ten units with associated amenity area, services and parking and any associated groundworks.

## Archaeological background

The following archaeological background is based on the Colchester Archaeological Trust report archive and the Colchester Historic Environment Record (CHER, ECCMCC numbers) accessed via the Colchester Heritage Explorer ([www.colchesterheritage.co.uk](http://www.colchesterheritage.co.uk)):

The proposed development is situated within an area of archaeological significance. It lies adjacent to Gryme's Dyke (MCC7464 & MCC8081). The Colchester dykes and earthworks are among the most important prehistoric monuments in Britain. They define the extent of the pre-Roman 'proto-town' (or *oppidum* in Latin) of *Camulodunum*. *Camulodunum* was the capital and home of Cunobelin, who was arguably of the most important leader in Britain in the decades leading up to the Roman invasion of AD 43. There have been several studies of and excavations on the dykes, which are described fully in the two principal reference works: *Camulodunum*, by CFC Hawkes and MR Hull (1947), and *Camulodunum 2, Colchester Archaeological Report 11 (CAR 11)*, by CFC Hawkes and Philip Crummy (1995).



Map 1: Extract of the general map of Colchester showing the locations of earthworks and excavations discussed in CAR 11 (Fig 6.1), current site is labelled blue.

Gryme's dyke is the outermost, longest and latest of all the dykes on the western side of the town. Gryme's Dyke faced westwards and took the form of a deep V-shaped ditch with a steep earth bank behind it. The dyke can be divided into three distinct sections on topographical grounds, i.e. Gryme's Dyke North, South and Middle (CAR 11, 27-9). The dyke survives for much of its length as a visible but badly damaged and denuded earthwork. The current site is located adjacent to an area named in CAR 11 as Grymes Dyke Middle. Excavation work between 1946-1958 (labelled 19 on map 1 above) revealed there was an entrance through Grymes Dyke and looked at the relationship between Grymes Dyke, the palisaded earthwork and the Laver ditch (for full discussion see CAR 11, 27-29, 59-61 and 109). At location 20 on Map 1 CAT excavated part of a section across Grymes Dyke in 1976. Part of the rampart was removed to construct a footpath. Only part of the base of eastern end of the rampart survived. Cut into the cover loam were a series of small shallow features that pre-date the bank and therefore suggest evidence of pre-dyke activity in the area of the current site (CAR 11, 109-110).

To the south of the site is the nationally important Late Iron Age and Roman complex at Gosbecks (Scheduled Monument NHLE no. 1002180; MCC7470) which is known from aerial photographs, geophysical surveys, and excavations (Hull 1958, 259-71; CAR 11, 95-105; CAT Report 30, 45 and 127). Archaeological remains at Gosbecks include: dykes, droveways and field systems; a large enclosure (MCC7044), possibly Cunobelin's farmstead (MCC7044); a small Roman fort of probable Claudian date (MCC7472); a Romano-British temple (MCC2849), surrounded by a monumental portico (MCC7043); a Roman theatre (MCC2831); a Roman watermain, possibly leading to a bath-house (MCC2903); and a road leading to the walled Roman town (MCC2529). Many of these remains are located within Gosbecks Archaeological Park.

To the west-southwest CAT have carried out a number of evaluations and excavations in advance of development around Fiveways Fruit Farm on both sides of Dyers Road (CAT Reports 506, 996, 1042, 1070 and 1221). An excavation in 2015 revealed extensive Middle Iron Age settlement (mid 4th to late 1st century BC) comprising two interlinked enclosed farmsteads and associated field system with stock control enclosures. Small-scale Neolithic, Bronze Age and Early Iron Age activity was evident in the form of worked flints and pottery sherds recovered from tree-throws and pits. Field boundary ditches, pits and tree-throws representing medieval, post-medieval and modern agricultural activity were also found across the site (CAT Report 1070).

Just to the south of the Fiveways CAT excavated the Stanway Quarry elite burial site. The Stanway elite burial site was excavated between 1987 and 2003 prior to the extraction of sands and gravel aggregates (CHER MCC8095). Five enclosures were recorded including an Iron Age farmstead and four Late Iron Age funerary enclosures of high status individuals of the Catuvellaunian family. The remains of two wooden chambers richly adorned with finds including pottery, weapons and game boards known as the 'Warriors burial' and the 'Doctor's burial' are nationally recognised for their significance (Crummy *et al*, 2007).

## **Planning background**

A planning application was made to Colchester Borough Council in March 2018 (application No. 180886) for *residential use of former car park to international house following change of use from B1a (offices) to C3 (dwellings) of international house (resubmission of planning permission 170259)*.

As the site lies within an area highlighted by the CHER as having a high potential for archaeological deposits, an archaeological condition was recommended by the Colchester Borough Council Archaeological Advisor (CBCAA). The recommended archaeological condition is based on the guidance given in the *National Planning Policy Framework* (MHCLG 2019).

## **Requirement for work** (Fig 1)

The required archaeological work was for an archaeological trial-trenched evaluation. Details are given in a Project Brief written by CBCAA (CBC 2019).

Specifically, a single linear trench (T1) 20m long by 1.8m wide will be located within the area of the new building. The trench may need to be widened in localised areas to facilitate the excavation of deep archaeological features (if encountered)

The evaluation is required to enable the archaeological resource, both in quality and extent, to be accurately quantified. To:

- Identify the date, approximate form and purpose of any archaeological deposit, together with its likely extent, localised depth and quality of preservation.
- Evaluate the likely impact of past land uses, and the possible presence of masking colluvial/alluvial deposits.
- Establish the potential for the survival of environmental evidence
- Provide sufficient information to construct an archaeological conservation strategy, dealing with preservation, the recording of archaeological deposits, working practices, timetables and orders of cost.

Further archaeological evaluation could be required if unusual deposits or other archaeological finds of significance are recovered, this decision will be made by the CBCAA and will be the subject of an additional brief and WSI.

## **General methodology**

All work carried out by CAT will be in accordance with:

- professional standards of the Chartered Institute for Archaeologists, including its *Code of Conduct* (CIfA 2014a, b)
- Standards and Frameworks published by East Anglian Archaeology (Gurney 2003, Medlycott 2011)
- relevant Health & Safety guidelines and requirements (CAT 2018)
- the Project Brief issued by the CBCAA (CBC 2019).

Professional CAT field archaeologists will undertake all specified archaeological work, for which they will be suitably experienced and qualified.

Notification of the supervisor/project manager's name and the start date for the project will be provided to CBCAA one week before start of work.

Unless it is the responsibility of other site contractors, CAT will study mains service locations and avoid damage to these.

At the start of work (immediately before fieldwork commences) an OASIS online record <http://ads.ahds.ac.uk/project/oasis/> will be initiated and key fields completed on Details, Location and Creators forms. At the end of the project all parts of the OASIS online form will be completed for submission to CHER. This will include an uploaded .PDF version of the entire report.

A unique HER event number will be obtained from the CBCAA prior to the commencement of fieldwork. The curating museum will be notified of the details of the project and the event code, which will be used to identify the project archive when depositing at the end of the project.

## **Staffing**

The number of field staff for this project is estimated as follows: One supervisor plus two archaeologists for one day.

In charge of day-to-day site work: Ben Holloway/Mark Baister



## **Evaluation methodology**

Where appropriate, modern overburden and any topsoil stripping/levelling will be performed using a mechanical excavator equipped with a toothless ditching bucket under the supervision and to the satisfaction of a professional archaeologist. If no archaeologically significant deposits are exposed, machine excavation will continue until natural subsoil is reached.

Where necessary, areas will be cleaned by hand to ensure the visibility of archaeological deposits.

If archaeological features or deposits are uncovered time will be allowed for these to be excavated, planned and recorded.

All features or deposits will be excavated by hand. This includes a 50% sample of discrete features (pits, etc), 10% of linear features (ditches, etc) in 1m wide sections, and 100% of complex structures/features. Complex archaeological structures such as walls, kilns, ovens or burials will be carefully cleaned, planned and fully recorded, but where possible left *in situ*. Only if it can be demonstrated that the complex structure/feature is likely to be destroyed by groundworks will it be removed, or on the rare occasion where full excavation (or exhumation in the case of burials) is necessary to achieve the objectives of the evaluation.

Burials, if encountered, will be left *in situ* at this evaluation stage with an on site human bone specialist available to record as much information as possible.

Fast hand-excavation techniques involving (for instance) picks, forks and mattocks will not be used on complex stratigraphy.

A sondage will be excavated in each trench to test the stratigraphy of the site. This will occur in every trench unless it can be demonstrated that a feature excavated within a particular trench has clearly penetrated into natural.

A representative section will be drawn of each trench, to include ground level, the depth of machining within the trench and the depth of any sondages.

A metal detector will be used to examine the trench, contexts and spoil heaps, and the finds recovered.

Individual records of excavated contexts, layers, features or deposits will be entered on proforma record sheets. Registers will be compiled of finds, small finds and soil samples.

## **Site surveying**

The evaluation trench and any features will be surveyed by Total Station, unless the particulars of the features indicate that manual planning techniques should be employed. Normal scale for archaeological site plans and sections is 1:20 and 1:10 respectively, unless circumstances indicate that other scales would be more appropriate.

The site grid will be tied into the National Grid. Corners of excavation areas will be located by NGR coordinates.

## **Environmental sampling policy**

The number and range of samples collected will be adequate to determine the potential of the site, with particular focus on palaeoenvironmental remains including both biological remains (e.g. plants, small vertebrates) and small sized artefacts (e.g. smithing debris), and to provide information for sampling strategies on any future excavation. Samples will be collected for

potential micromorphological and other pedological sedimentological analysis. Environmental bulk samples will be 40 litres in size (assuming context is large enough).

Sampling strategies will address questions of:

- the range of preservation types (charred, mineral-replaced, waterlogged), and their quality
- concentrations of macro-remains
- and differences in remains from undated and dated features
- variation between different feature types and areas of site

CAT has an arrangement with Val Fryer / Lisa Gray whereby any potentially rich environmental layers or features will be appropriately sampled as a matter of course. Trained CAT staff will process the samples and the flots will be sent to Val Fryer or Lisa Gray for analysis and reporting.

Should any complex, or otherwise outstanding deposits be encountered, VF or LG will be asked onto site to advise. Waterlogged 'organic' features will always be sampled. In all cases, the advice of VF/LG and/or the Historic England Regional Advisor in Archaeological Science (East of England) on sampling strategies for complex or waterlogged deposits will be followed, including the taking of monolith samples.

## **Human remains**

CBCAA will be notified immediately if any human remains are encountered during the evaluation.

Burials, if encountered, will be left *in situ* at this evaluation stage. Following HE guidance (HE 2018) if the human remains are not to be lifted, the project osteologist will be available to record the human remains *in situ* (i.e. a site visit).

If circumstances indicated it were prudent or necessary to remove remains from the site, the following criteria would be applied; if it is clear from their position, context, depth, or other factors that the remains are ancient, then normal procedure is to apply to the Department of Justice for a licence to remove them. Conditions laid down by the DoJ license will be followed. If it seems that the remains are not ancient, then the coroner, the client, and the CBCAA will be informed, and any advice and/or instruction from the coroner will be followed.

Human remains removed from site for analysis may be sent for radiocarbon dating (see finds section).

## **Photographic record**

Will include both general and feature-specific photographs, the latter with scale and north arrow. A photo register giving context number, details, and direction of shot will be prepared on site, and included in site archive. Digital site photographs will be taken and archived as per Historic England guidelines (HE 2015a).

## **Finds**

All significant finds will be retained.

All finds, where appropriate, will be washed and marked with site code and context number. CAT may use local volunteers to assist the CAT Finds Officer with this task.

Most of our finds reports are written internally by CAT Staff under the supervision and direction of Philip Crummy (Director) and Howard Brooks (Deputy Director). This includes specialist subjects such as:

ceramic finds (pottery and ceramic building material): Matthew Loughton  
animal bones: Alec Wade (or Adam Wightman, small groups only)

small finds, metalwork, coins, etc: Laura Pooley  
non-ceramic bulk finds: Laura Pooley  
flints: Adam Wightman  
environmental processing: Robin Mathieson/Bronagh Quinn  
project osteologist (human remains): Meghan Seehra

or to outside specialists:

animal and human bone: Julie Curl (*Sylvanus*)  
environmental assessment and analysis: Val Fryer / Lisa Gray  
radiocarbon dating: SUERC Radiocarbon Dating Laboratory, Glasgow  
conservation/x-ray: Laura Ratcliffe (LR Conservation) / Norfolk Museums Service,  
Conservation and Design Services

Other specialists whose opinion can be sought on large or complex groups include:

flint: Hazel Martingell  
prehistoric pottery: Stephen Benfield / Nigel Brown / Paul Sealey  
Roman pottery: Stephen Benfield / Paul Sealey / Jo Mills / Val Rigby /  
Gwladys Monteil  
Roman brick/tile: Ernest Black / Ian Betts (MOLA)  
Roman glass: Hilary Cool  
small finds: Nina Crummy  
other: EH Regional Adviser in Archaeological Science (East of England).

All finds of potential treasure will be removed to a safe place, and the coroner informed immediately, in accordance with the rules of the Treasure Act 1996. The definition of treasure is given in pages 3-5 of the Code of Practice of the above act. This refers primarily to gold or silver objects.

Requirements for conservation and storage of finds will be agreed with the appropriate museum prior to the start of work, and confirmed to CBCAA.

A contingency will be made in the budget for scientific assessment/analysis. This can include soil micromorphological assessment and/or absolute dating (such as archaeomagnetic and radiocarbon) if suitable deposits are identified. The Historic England Regional Science Advisor will be consulted for advice.

## **Results**

Notification will be given to CBCAA when the fieldwork has been completed

An appropriate archive will be prepared to minimum acceptable standards outlined in *Management of Research Projects in the Historic Environment* (HE 2015b).

The report will be submitted within 6 months of the end of fieldwork, with a copy supplied to CBCAA as a PDF.

The report will contain:

- Location plan of groundworks. At least two corners of which will be given 10 figure grid references.
- Section/s drawings showing depth of deposits from present ground level with Ordnance Datum, vertical and horizontal scale.
- Archaeological methodology and detailed results including a suitable conclusion and discussion and results referring to Regional Research Frameworks (Medlycott 2011).
- All specialist reports or assessments
- A concise non-technical summary of the project results.

An EHER summary sheet will also be completed within four weeks and supplied to CBCAA.

Results will be published, to at least a summary level (i.e. round-up in *Essex Archaeology & History*) in the year following the archaeological field work. An allowance will be made in the

project costs for the report to be published in an adequately peer reviewed journal or monograph series

### **Archive deposition**

It is a policy of Colchester Borough Council that the integrity of the site archive be maintained (i.e. all finds and records should be properly curated by a single organisation), with the archive available for public consultation. To achieve this desired aim it is assumed that the full archive will be deposited in Colchester Museums *unless otherwise agreed in advance*. (A full copy of the archive shall in any case be deposited).

**By accepting this WSI, the client agrees to deposit the archive, including all artefacts, at Colchester & Ipswich Museum.**

The requirements for archive storage will be agreed with the curating museum. If the finds are to remain with the landowner, a full copy of the archive will be housed with the curating museum.

The archive will be deposited with Colchester & Ipswich Museum or an alternate repository (approved by COLEM and CBCAA) within 3 months of the completion of the final publication report, with a summary of the contents of the archive supplied to CBCAA. Digital archives will be curated with the Archaeology Data Service, or similar accredited digital archive repository, that safeguard the long-term curation of digital records. Prior to deposition CAT's data management plan (based on the official guidelines from the Digital Curation Centre [DCC 2013]) will ensure the integrity of the digital archive.

The CBCAA will be notified of the archiving timetable throughout the project and once deposition has occurred.

A digital / vector drawing of the site be given to the CBCAA for integration into the HER.

### **Monitoring**

CBCAA will be responsible for monitoring progress and standards throughout the project, and will be kept regularly informed during fieldwork, post-excavation and publication stages.

Notification of the start of work will be given to CBCAA one week in advance of its commencement.

Any variations in this WSI will be agreed with CBCAA prior to them being carried out.

CBCAA will be notified when the fieldwork is complete.

The involvement of CBCAA shall be acknowledged in any report or publication generated by this project.

### **References**

Note: CAT reports, except for DBAs, are available online in PDF format at <http://cat.essex.ac.uk>

Brown, D	2011	<i>Archaeological Archives: A guide to best practice in creation, compilation, transfer and curation</i>
CAR 11	1995	<i>Colchester Archaeological Report 11: Camulodunum 2</i> , by C F C Hawkes and P Crummy
CAT	2018	<i>Health &amp; Safety Policy</i>
CAT Report 30	1998	<i>Gosbecks Archaeological Park, Colchester: an archaeological evaluation of the north-west area</i> . By S Benfield
CAT Report 45	1999	<i>Excavation at Gosbecks Archaeological Park: July-August 1999</i> . By C Austin

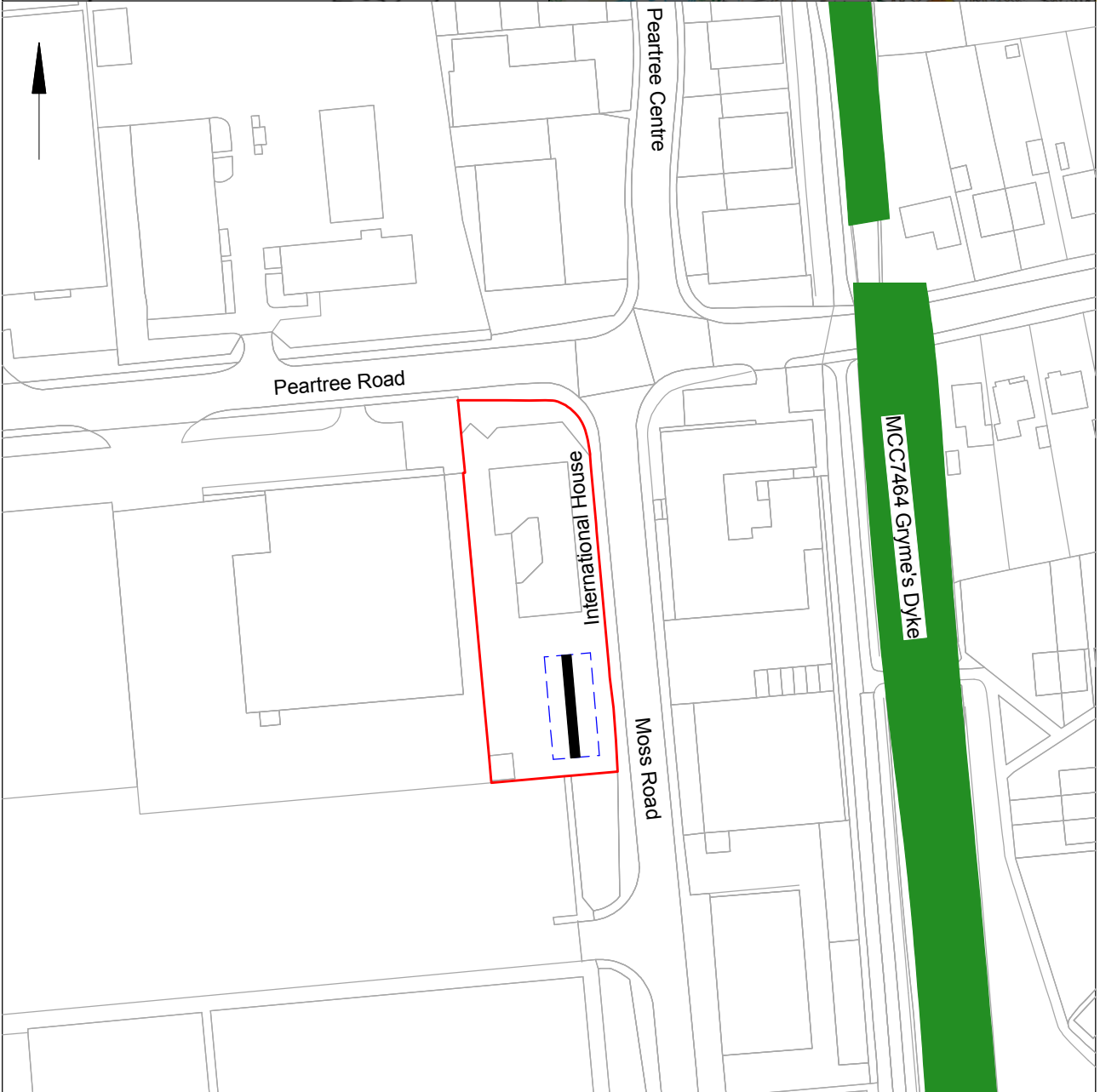
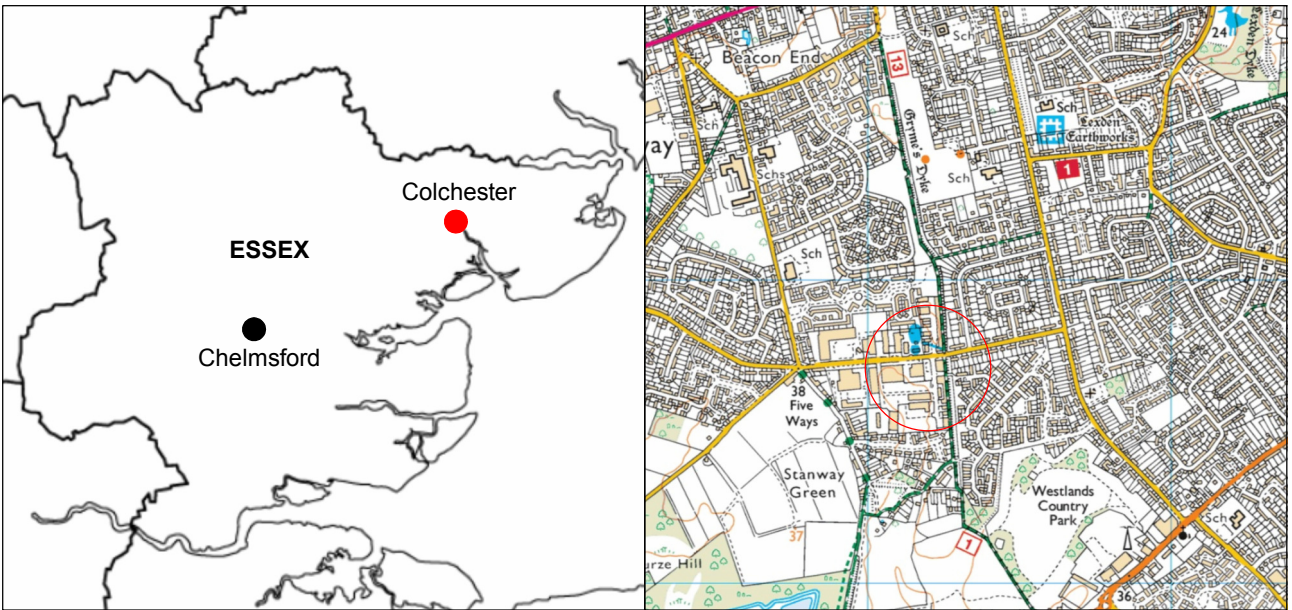
CAT Report 127	2008	<i>Excavations of Late Iron Age and Roman features and a Roman road north of Gosbecks Archaeological Park, Colchester, Essex 1995-1996.</i> By S Benfield
CAT Report 312	2005	<i>Excavations at Abbotstone field, Bell House Pit, Tarmac Colchester Quarry, Warren Lane, Stanway, Essex: 1999-2001.</i> By L Pooley
CAT Report 493	2009	<i>An archaeological evaluation at Fiveways Fruit Farm, Dyer's Road, Stanway, Colchester, Essex: September-October 2008</i>
CAT Report 506	2009	<i>A desk-based assessment of the archaeological remains on and around a proposed development site at Stanway, Colchester, Essex: March 2009</i>
CAT Report 996	1996	<i>A desk-based assessment of the archaeological remains on and around a site at Fiveways Fruit Farm, Stanway, Essex</i>
CAT Report 1042	2016	<i>Archaeological evaluation on Phase 1 land at Fiveways Fruit Farm, Dyer's Road, Stanway, Essex, CO3 0QR: November 2016.</i>
CAT Report 1070	2019	<i>Middle Iron Age farmsteads: Archaeological excavation on land at Fiveways Fruit Farm, Dyers Road, Stanway, Essex, CO3 0QR: May-December 2015.</i>
CAT Report 1221	2018	<i>Archaeological excavation on Phase 1 land at Fiveways Fruit Farm, Stanway, Essex – January 2018</i>
CAT Report 1289	2018	<i>Archaeological evaluation on land at Warren Lane, Stanway, Colchester, Essex, CO3 0NW: June 2018.</i> By E Hicks
Crummy, C <i>et al</i>	2007	<i>Stanway: an elite burial site at Camulodunum. Britannia Monograph Series 24.</i>
CBCAA	2019	<i>Brief for an Archaeological Trial Trench Evaluation International House, Moss Road, Stanway, CO3 0JL.</i> By J Tipper
CIfA	2014a	<i>Standard and Guidance for archaeological evaluation</i>
CIfA	2014b	<i>Standard and guidance for the collection, documentation, conservation and research of archaeological materials</i>
Gurney, D	2003	<i>Standards for field archaeology in the East of England.</i> East Anglian Archaeology Occasional Papers 14 (EAA 14).
Hawkes, C & Hull MR	1947	<i>Camulodunum, first report on the excavations at Colchester 1930-39, RRCSAL, 14</i>
Historic England (HE)	2015a	<i>Digital Image capture and File Storage: Guidelines for best practice.</i> By S Cole & P Backhouse
Historic England (HE)	2015b	<i>Management of Research Projects in the Historic Environment (MoRPHE)</i>
Historic England (HE)	2018	<i>The Role of the Human Osteologist in an Archaeological Fieldwork Project.</i> By S Mays, M Brickley and J Sidell
Medlycott, M	2011	<i>Research and archaeology revisited: A revised framework for the East of England.</i> East Anglian Archaeology Occasional Papers 24 (EAA 24)
MHCLG	2019	<i>National Planning Policy Framework.</i> Ministry of Housing, Communities and Local Government.

E Holloway



Colchester Archaeological Trust,  
Roman Circus House,  
Roman Circus Walk,  
Colchester,  
Essex, CO2 2GZ

tel: 01206 501785  
email: [eh@catuk.org](mailto:eh@catuk.org)



© Crown copyright. All rights reserved. Licence number 100039294.

Fig 1 Site location and trench layout in relation to proposed development (dashed blue line).



# OASIS DATA COLLECTION FORM: England

[List of Projects](#) | [Manage Projects](#) | [Search Projects](#) | [New project](#) | [Change your details](#) | [HER coverage](#) | [Change country](#) | [Log out](#)

## Printable version

**OASIS ID: colchest3-371997**

### Project details

Project name	Archaeological evaluation by trial-trench at International House, Moss Road, Stanway, Colchester, Essex, CO3 0JL.
Short description of the project	An archaeological evaluation (one trial-trench) was carried out at International House, Moss Road, Stanway, Colchester, Essex in advance of the construction of a residential development of ten units with an associated amenity area, services and parking. The site lies next to Gryme's Dyke, one of a series of earthworks which define the Late Iron Age oppidum of Camulodunum. Despite being located in an archaeologically-sensitive area, however, only a modern concrete footing was uncovered.
Project dates	Start: 07-11-2019 End: 07-11-2019
Previous/future work	No / Not known
Any associated project reference codes	180886 - Planning Application No.
Any associated project reference codes	170259 - Planning Application No.
Any associated project reference codes	2019/10m - Contracting Unit No.
Any associated project reference codes	ECC4395 - HER event no.
Type of project	Field evaluation
Site status	None
Current Land use	Other 3 - Built over
Monument type	FOOTING Modern
Methods & techniques	""Targeted Trenches""
Development type	Urban residential (e.g. flats, houses, etc.)
Prompt	National Planning Policy Framework - NPPF
Position in the planning process	After full determination (eg. As a condition)

### Project location

Country	England
Site location	ESSEX COLCHESTER STANWAY International House, Moss Road, Stanway, Colchester, Essex
Postcode	CO3 0JL
Study area	0.18 Hectares
Site coordinates	TL 9619 2368 51.876602738209 0.850536932028 51 52 35 N 000 51 01 E Point
Height OD / Depth	Min: 34.78m Max: 34.8m

### Project creators

Name of Organisation	Colchester Archaeological Trust
Project brief originator	CBC Archaeological Officer
Project design originator	Emma Holloway
Project director/manager	Chris Lister
Project supervisor	Ben Holloway
Type of sponsor/funding body	Developer
Name of sponsor/funding body	DG Rose Ltd

### Project archives

Physical Archive Exists?	No
Digital Archive recipient	Colchester Museum
Digital Archive ID	ECC4395
Digital Contents	"other"
Digital Media available	"Images raster / digital photography","Text"
Paper Archive recipient	Colchester Museum
Paper Archive ID	ECC4395
Paper Contents	"other"
Paper Media available	"Drawing","Miscellaneous Material","Photograph","Report","Section"

### Project bibliography 1

Publication type	Grey literature (unpublished document/manuscript)
Title	Archaeological evaluation at International House, Moss Road, Stanway, Colchester, Essex, CO3 0JL: November 2019
Author(s)/Editor(s)	Hicks, E.



Other bibliographic details	CAT Report 1498
Date	2019
Issuer or publisher	Colchester Archaeological Trust
Place of issue or publication	Colchester
Description	A4 loose-leaf ring-bound
URL	<a href="http://cat.essex.ac.uk">http://cat.essex.ac.uk</a>
Entered by	Dr Elliott Hicks (eh2@catuk.org)
Entered on	14 November 2019

## OASIS:

Please e-mail [Historic England](#) for OASIS help and advice

© ADS 1996-2012 Created by [Jo Gilham and Jen Mitcham](#), email [Last modified Wednesday 9 May 2012](#)

Cite only: <http://www.oasis.ac.uk/form/print.cfm?id=373913> for this page

[Cookies](#) [Privacy Policy](#)