

Archaeological evaluation at 9 The Paddock, Stock, Essex, CM4 9BG

July 2022



by Harvey Furniss

figures by Chris Lister, Harvey Furniss and Emma Holloway

fieldwork by Harvey Furniss, Karl Davies and Gabby Smith

commissioned by Bill Wright, Silverswan Homes

NGR: TQ 69311 98932 (centre)

Planning ref.: CHL 22/00541/FL

CAT project ref.: 2022/05i

ECC code: SKTP22

Chelmsford Museum accession code: CHMER: 2022.016

OASIS ref.: colchest3-506862



Colchester Archaeological Trust

Roman Circus House,
Roman Circus Walk,
Colchester,
Essex, CO2 7GZ

tel.: 01206 501785

email: hf@catuk.org

CAT Report 1831

July 2022

Contents

1	Summary	1
2	Introduction	1
3	Archaeological background	1
4	Aim	2
5	Results	2
6	Finds	4
7	Conclusion	4
8	Acknowledgements	4
9	References	4
10	Abbreviations and glossary	4
11	Contents of archive	5
12	Archive deposition	5

Figures after p5

OASIS summary sheet

List of photographs and figures

Cover: site shot

Photograph 1	Trench 1, view east	2
Photograph 2	Representative section from Trench 1, view west	3
Photograph 3	Trench 2, view north	3

Fig 1 Site location and trench layout in relation to proposed development

Fig 2 Evaluation results

Fig 3 Representative sections

1 Summary

An archaeological evaluation (two T-shaped trial-trenches) was carried out at 9 The Paddock, Stock, Essex, in advance of the construction of two dwellings with driveways. The site lies near to the putative site of a kiln which was part of the village's historic pottery industry. Despite the location of the site in an archaeologically-sensitive area, however, no archaeological remains or material were encountered.

2 Introduction (Fig 1)

This is the report for an archaeological evaluation carried out by Colchester Archaeological Trust (CAT) at 9 The Paddock, Stock, Essex on 20th July 2022. The work was commissioned by Bill Wright of Silverswan Homes in advance of the construction of two dwellings and driveways.

In response to consultation with Essex County Council Place Services (ECCPS), Historic Environment Advisor Mark Baister advised that in order to establish the archaeological implications of this application, the applicant should be required to commission a scheme of archaeological investigation in accordance with the *National Planning Policy Framework* (MHCLG 2019).

All archaeological work was carried out in accordance with a *Brief for Archaeological Evaluation and Excavation*, detailing the required archaeological work, written by Mark Baister (ECCPS 2022), and a written scheme of investigation (WSI) prepared by CAT in response to the brief and agreed with ECCPS (CAT 2022).

In addition to the brief and WSI, all fieldwork and reporting was done in accordance with *Management of Research Projects in the Historic Environment (MoRPHE)* (Historic England 2016), and with *Standards for field archaeology in the East of England* (EAA 14 and 24). This report mirrors standards and practices contained in the Institute for Archaeologists' *Standard and guidance for archaeological field evaluation* (CIfA 2014a) and *Standard and guidance for the collection, documentation, conservation and research of archaeological materials* (CIfA 2014b).

3 Archaeological background

The following archaeological background draws on the brief and the Essex Historic Environment Record (EHER) held at Essex County Council, County Hall, Chelmsford, Essex (accessible to the public via <http://www.heritagegateway.org.uk>).

At Stock the local landscape is undulating rising to around 94 metres OD. The geology comprises of London clay to the east, with claygate member to the west overlain by Bagshot formation sand/gravels and head clay silt/sand/gravel in the river valleys (Bennett 2006, 30). The medieval and post-medieval core survives in good condition in the historic village of Stock and is protected as a conservation area (Bennett 2006, 133).

The Historic Environment Record shows that the development site is within an area of archaeological potential. From the 16th to the 19th century, Stock had a thriving brick, tile and pottery industry which formed an important part of the local economy. Discoveries relating to this industry include an 18th-century brick and tile kiln c 110m to the north of the development site (EHER 5507). Significant quantities of kiln waste have been recovered at 10 The Paddock (CAT Report 704, EHER 48334), approximately 160m to the south-east near a manhole on the junction of Mill Road and Unwin Place (EHER 5391), and 260m to the south-west at 16-20 Mill Road (CAT Report 598). Recent archaeological investigations at 'Caer Luel', The Paddocks (CAT Report 1201), 2 The Paddocks (CAT Report 1272), 3 The Paddocks (CAT Report 1580) and 1 The Paddocks (CAT Report 1709) have, however, uncovered no significant archaeological remains.

A Late Bronze Age/Early Iron Age gully was found south-east of the site (EHER 46565) and to the south-west of the site is the location of a possible Iron Age enclosure (EHER 9135) and Roman cremation cemetery (EHER 5380).

4 Aim

The aim of the archaeological evaluation was to record the extent of any surviving archaeological deposits, and to assess the archaeological potential of the site to allow the ECCHEA to determine if further investigation is required.

5 Results (Figs 2-3)

Two T-shaped trial-trenches were machine-excavated under the supervision of a CAT archaeologist. Trench 1 (T1) totalled 27m long and Trench 2 (T2) 24m. Both trenches measured c 1.8m wide.

The stratigraphy of the trenches was:

- topsoil (L1, c 0.2-0.24m thick, friable, mid to dark greyish-brown silty-loam) sealing
- subsoil (L2, c 0.13-0.27m thick, firm, mid to light grey-brown silty-loam with frequent stone inclusions) over
- a layer of firm, dark orange clay natural (L3).

No archaeological remains or material were encountered.

Modern disturbance in the central and southern areas of both trenches was the result of the removal of pre-existing building foundations (see Fig 2). The depths of the disturbance were taken by measuring against the top of the surviving topsoil, Trench 1 measured at 0.62m deep and 0.52m in Trench 2.



Photograph 1 Trench 1, view east



Photograph 2 Representative section from Trench 1 view west



Photograph 3 Trench 2 view north

6 Finds

There were no finds.

7 Conclusion

Despite being located in an archaeologically-sensitive area, no archaeological remains or material were encountered.

8 Acknowledgements

CAT thanks Bill Wright of Silverswan Homes for commissioning and funding the work. The project was managed by C Lister, fieldwork was carried out by H Furniss with K Davies and G Smith. Figures are by C Lister, H Furniss and E Holloway. The project was monitored for ECCPS by Mark Baister.

9 References

Note: all CAT reports, except for DBAs, are available online in PDF format at <http://cat.essex.ac.uk>

- | | | |
|--------------------------|-------|--|
| Bennett, A | 2006 | <i>Chelmsford Borough Historic Environment Characterisation Project</i> . ECC |
| Brown, N & Glazebrook, J | 2000 | <i>Research and Archaeology: A Framework for the Eastern Counties 2, Research agenda and strategy</i> . East Anglian Archaeology Occasional Paper 8 (EAA 8) |
| CAT | 2022 | <i>Health & Safety Policy</i> |
| CAT Report 598 | 2013 | <i>Archaeological trial-trenching at 16-20 Mill Road, Stock, Essex. March 2011</i> , by A Wightman and H Brooks |
| CAT Report 704 | 2013 | <i>An archaeological evaluation by trial-trenching at 10, The Paddock, Stock, Essex: May 2013</i> , by A Wightman |
| CAT Report 1201 | 2017 | <i>Archaeological monitoring and recording at Caer Luel, The Paddock, Stock, CM4 9BG: November 2017</i> , by L Pooley |
| CAT Report 1272 | 2018 | <i>Archaeological evaluation at 2 The Paddocks, Stock, Essex, CM4 9BG: May 2018</i> , by E Hicks |
| CAT Report 1580 | 2020 | <i>Archaeological evaluation at 3 The Paddock, Stock, Essex, CM4 9BG: July 2020</i> , by E Hicks |
| CAT Report 1580 | 2021 | <i>Archaeological monitoring at 1 The Paddock, Stock, Ingatestone, Essex – September 2021</i> , by M Seehra |
| CifA | 2014a | <i>Standard and Guidance for archaeological evaluation</i> |
| CifA | 2014b | <i>Standard and guidance for the collection, documentation, conservation and research of archaeological materials</i> |
| ECCPS | 2022 | <i>Brief for Archaeological Evaluation and Excavation at 9 The Paddock, Stock</i> , by Mark Baister |
| Ennis, T | 2007 | <i>71 Mill Road, Stock: Archaeological monitoring and recording</i> . ECC Field Archaeology Unit Report 1746 |
| Gurney, D | 2003 | <i>Standards for field archaeology in the East of England</i> . East Anglian Archaeology Occasional Papers 14 (EAA 14) |
| Historic England | 2016 | <i>Management of Research Projects in the Historic Environment (MoRPHE)</i> |
| Medlycott, M | 2011 | <i>Research and archaeology revisited: A revised framework for the East of England</i> . East Anglian Archaeology Occasional Papers 24 (EAA 24) |
| MHCLG | 2019 | <i>National Planning Policy Framework</i> . Ministry of Housing, Communities and Local Government. |
| Phillips, C | 2003 | <i>The Story of Stock and Buttsby</i> |

10 Abbreviations and glossary

Bronze Age	period from c 2500 – 700 BC
CAT	Colchester Archaeological Trust
CifA	Chartered Institute for Archaeologists
ECC	Essex County Council
ECCHEA	Essex County Council Historic Environment Advisor
ECCPS	Essex County Council Place Services
EHHER	Essex Historic Environment Record

feature (F)	an identifiable thing like a pit, a wall, a drain: can contain 'contexts'
Iron Age	period from 700 BC to Roman invasion of AD 43
layer (L)	distinct or distinguishable deposit (layer) of material
modern	period from c AD 1800 to the present
natural	geological deposit undisturbed by human activity
NGR	National Grid Reference
OASIS	Online Access to the Index of Archaeological Investigations, http://oasis.ac.uk/pages/wiki/Main
post-medieval	from c AD 1500 to c 1800
Roman	the period from AD 43 to c AD 410
section	(abbreviation sx or Sx) vertical slice through feature/s or layer/s
ws	written scheme of investigation

11 Contents of digital archive

The report (CAT Report 1831)
ECC evaluation brief, CAT written scheme of investigation
Site digital photographs, thumbnails and log
Graphic files
Site data
Survey data

12 Archive deposition

The archive is currently held by the Colchester Archaeological Trust at Roman Circus House, Roman Circus Walk, Colchester, Essex CO2 7GZ, but will be permanently deposited with the Archaeological Data Service.

© Colchester Archaeological Trust 2022

Distribution list:

Bill Wright, Silverswan Homes
ECC Place Services Historic Environment Advisor
Essex Historic Environment Record, Essex County Council

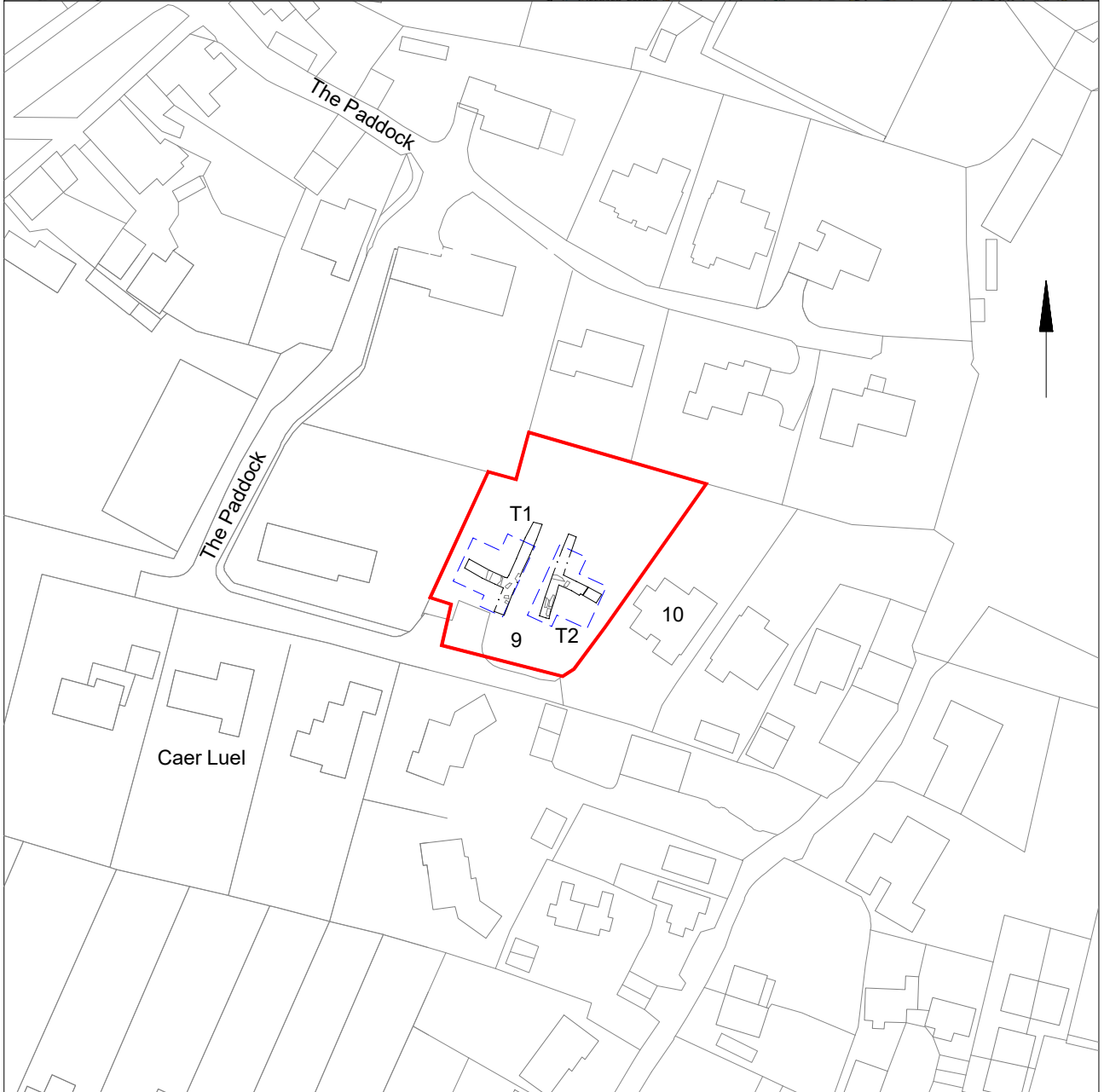
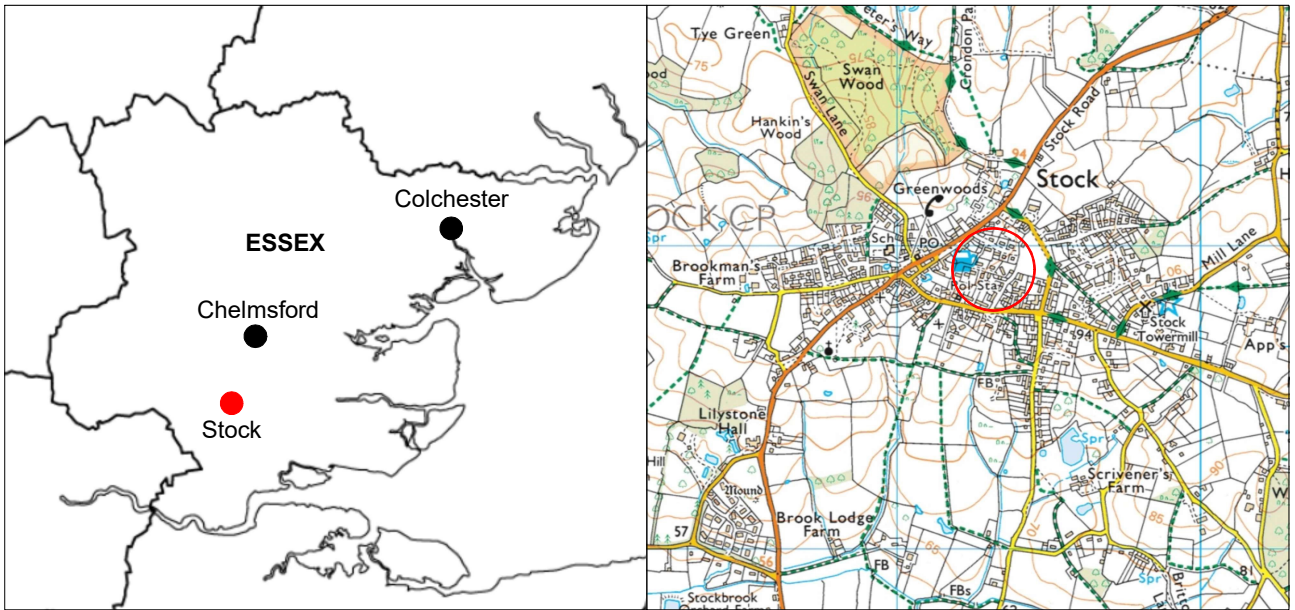


Colchester Archaeological Trust

Roman Circus House,
Roman Circus Walk,
Colchester,
Essex, CO2 7GZ

tel.: 01206 501785
email: hf@catuk.org

Checked by: Philip Crummy
Date: 29/07/22



© Crown copyright. All rights reserved. Licence number 100039294.

Fig 1 Site location and trench results in relation to the proposed development (dashed blue lines).



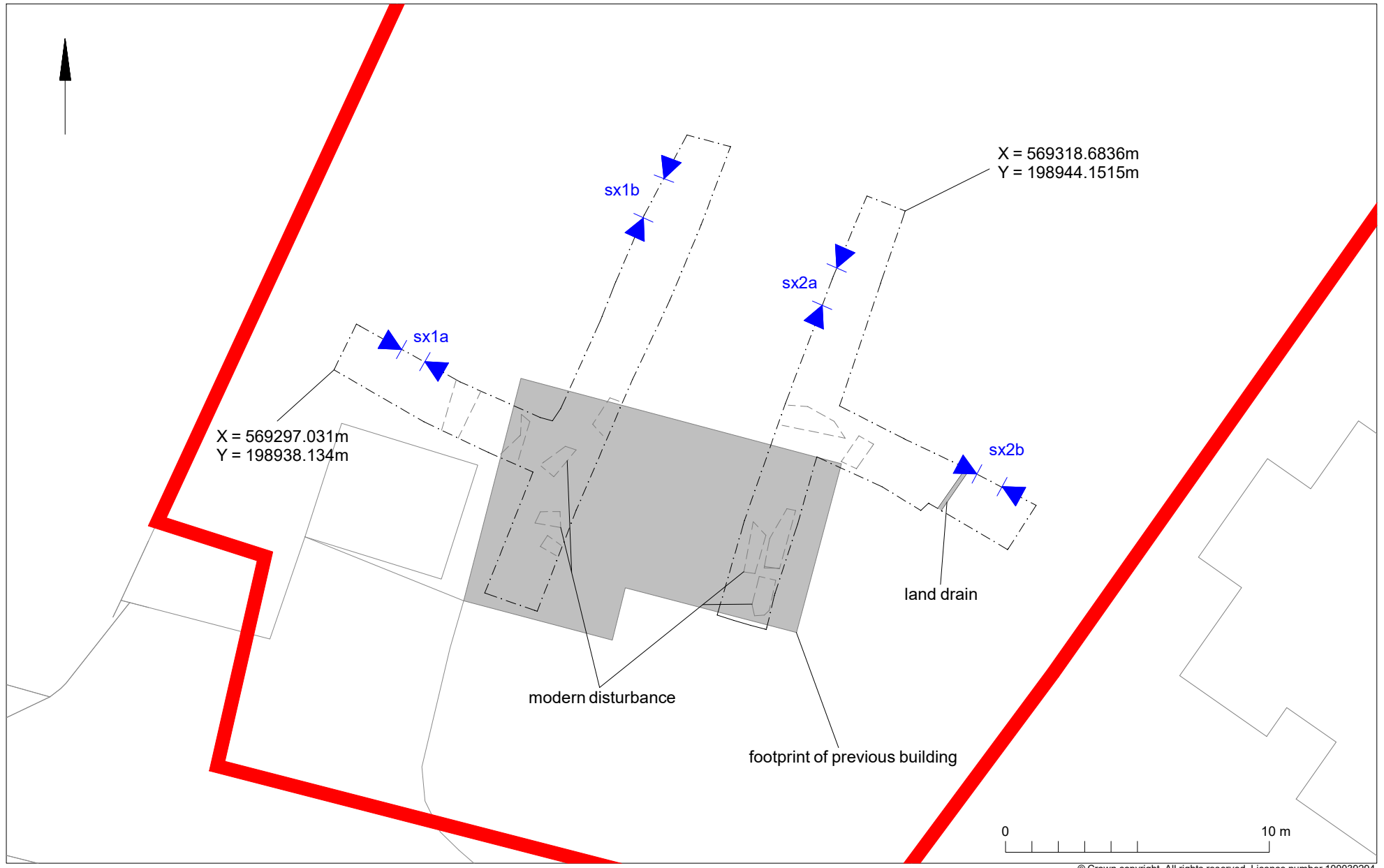


Fig 2 Results

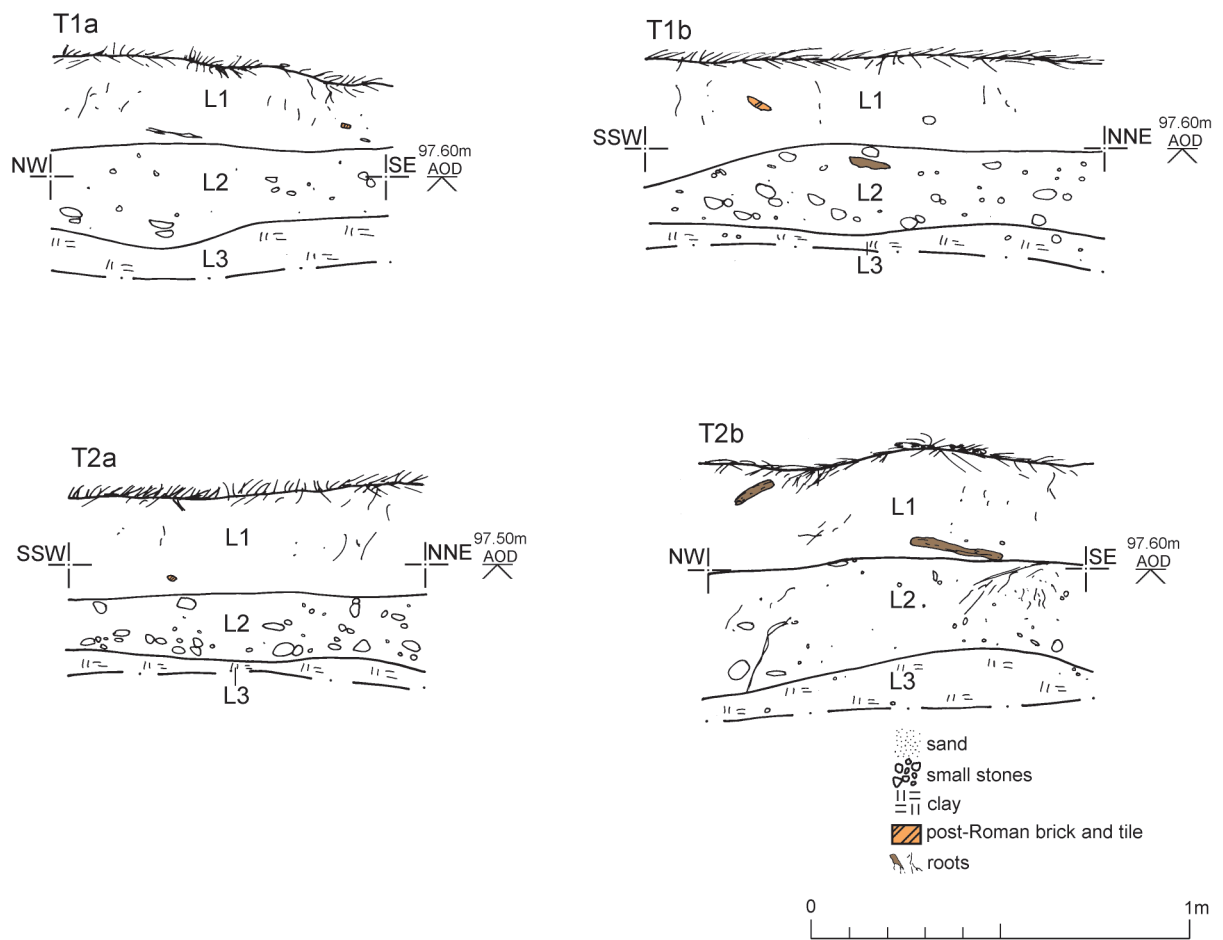


Fig 3 Representative sections.

Summary for colchest3-506862

OASIS ID (UID)	colchest3-506862
Project Name	Evaluation at 9 The Paddock, Stock, Ingatestone, Essex, CM4 9BG
Sitename	9 The Paddock, Stock, Ingatestone, Essex, CM4 9BG
Activity type	Evaluation
Project Identifier(s)	2022/05i
Planning Id	CHL/22/00541/FUL
Reason For Investigation	Planning: Post determination
Organisation Responsible for work	Colchester Archaeological Trust
Project Dates	20-Jul-2022 - 20-Jul-2022
Location	9 The Paddock, Stock, Ingatestone, Essex, CM4 9BG NGR : TQ 69311 98932 LL : 51.6636617027053, 0.446670710394087 12 Fig : 569311,198932
Administrative Areas	Country : England County : Essex District : Chelmsford Parish : Stock
Project Methodology	Archaeological evaluation of two T-shaped evaluation trenches as outlined in the site brief and WSI
Project Results	An archaeological evaluation (two T-shaped trial-trenches) was carried out at 9 The Paddock, Stock, Essex, in advance of the construction of two dwellings with driveways. The site lies near to the putative site of a kiln which was part of the village's historic pottery industry. Despite the location of the site in an archaeologically-sensitive area, however, no archaeological remains or material were encountered.
Keywords	
Funder	
HER	Essex HER - unRev - STANDARD
Person Responsible for work	H, Furniss
HER Identifiers	
Archives	Digital Archive - to be deposited with Archaeology Data Service Archive;